

# CONCEPT BOOKLET

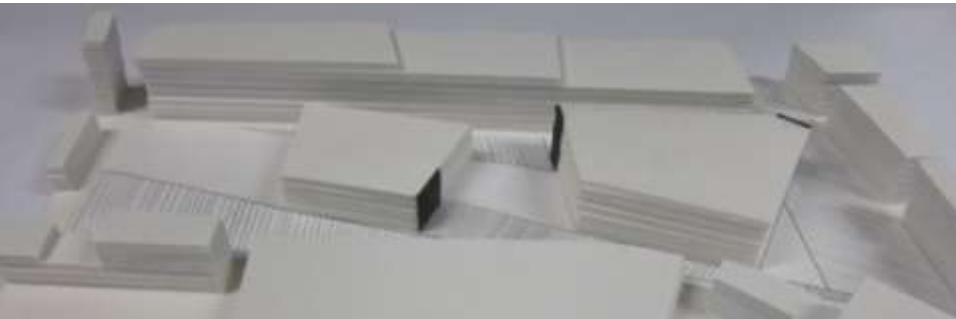




IDEAL THEATER  
DESIGN STATEMENT DESCRIBING THE PROJECT



Site of the project, in SAINT-ROCH neighborhood in QUEBEC



Study model for the concept



Conical perspective since Dorchester avenue



Conical form of the site, at the cross of Saint-Vallier Street and Dorchester Avenue.

## A SPECIFIC SITE OF QUEBEC

The chosen site is located in Saint-ROCH neighborhood in Quebec, it is actually surrounded by a university, "The Fabric", an old manufacture transformed into a school for visual and dramatic arts, and other building.

## IDEAL THEATER-URBAN THEATRICALITY OWING TO "VISION CONE"

Our vision of the ideal theater concept consists in dramatize urban context of the building and the latter by creating "urban theatricality". Indeed, using the "vision cone" is a leitmotiv allowing to design the "ideal theater" existing on the site owing to the inspiration of the site. The conical form of the site at the corner of Dorchester Avenue and Saint-Vallier Street and conical perception of the buildings since Dorchester Avenue is the first source of inspiration. Moreover, the vision cone is a technical term in theater room. By using strong lines of the site, we decide to focus on many entrances of the building in order to create "dramatic entrance" suggesting urban wings, leading by a curtain on Saint Vallier Street, creating "dramatic entrance".

## PLACE FOR PERFORMING ARTS

For putting in place the building, we divide the long site in places and buildings. The two buildings we want to connect have their own function: a university extension of "the Fabric" and a theater. The place between is the heart of our project in that it is the place for performing arts. We want to connect the project with this university building physically and historically.

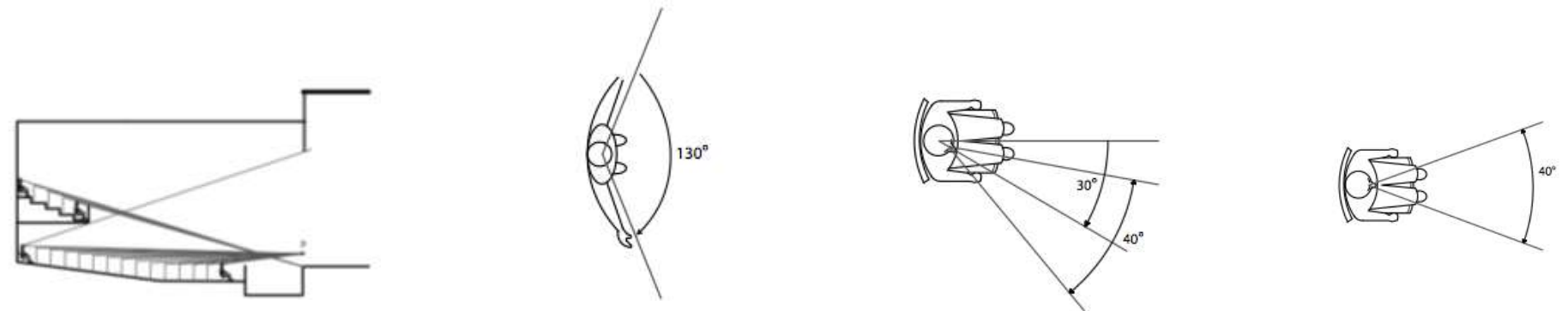
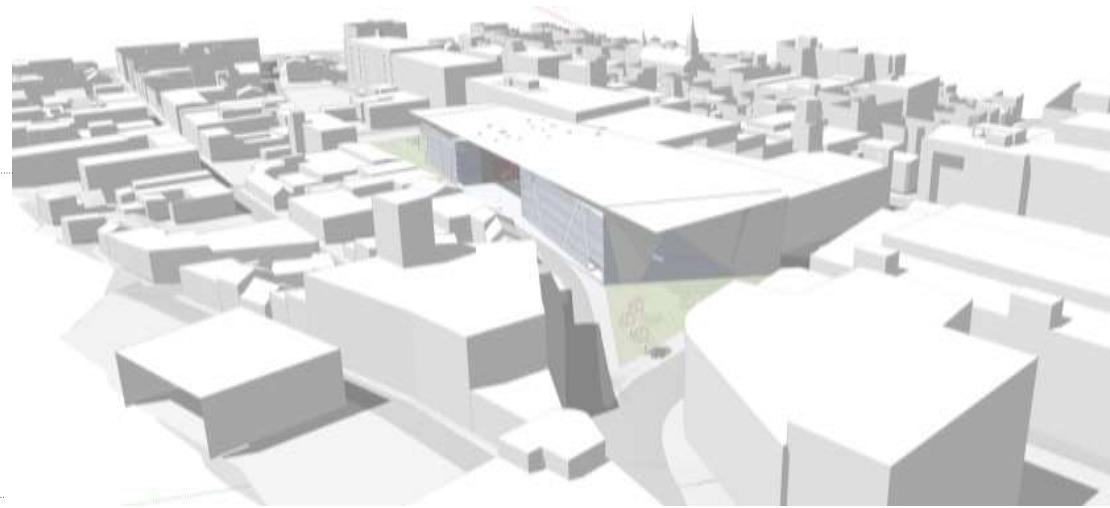


Diagram of the technical notions of vision cone in a theater

## DESIGN PROCESS

STEP 4

The light and aerodynamic roof is independent from the building and allows the entrance of natural light by day for conviviality.



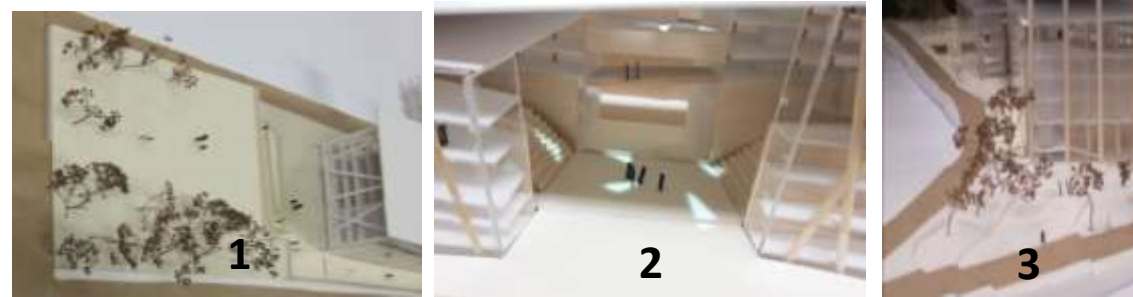
STEP 3

The project revolves around the “kernel” composed by the place defined as a stage structure, rehearsal space, stage area and catwalks. We would like that the spaces around the kernel are fluent, connected, dematerialized and built with a light structure.



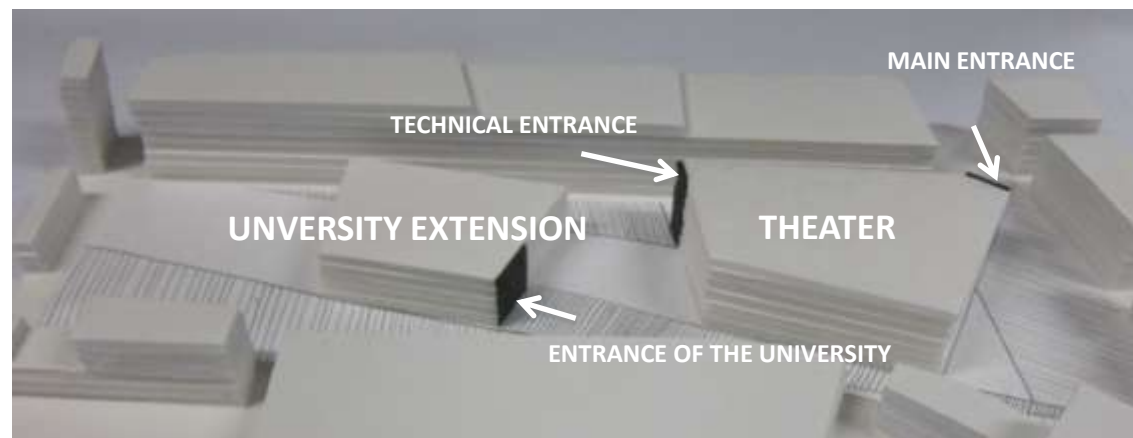
STEP 2

The alternation of places and build surface give a better human scale on this site. Each place has his own identity. The first one is a quiet place for the neighborhood, the second one for performing arts, the last one to lead to the emblematic frontage of the theater.



STEP 1

The first thing we done was to define how we want to locate on the site by drawing many perspectives. The red one are already present on the site. We create the orange one inspired by the strong line of the site to lead to dramatic entrance of the building.



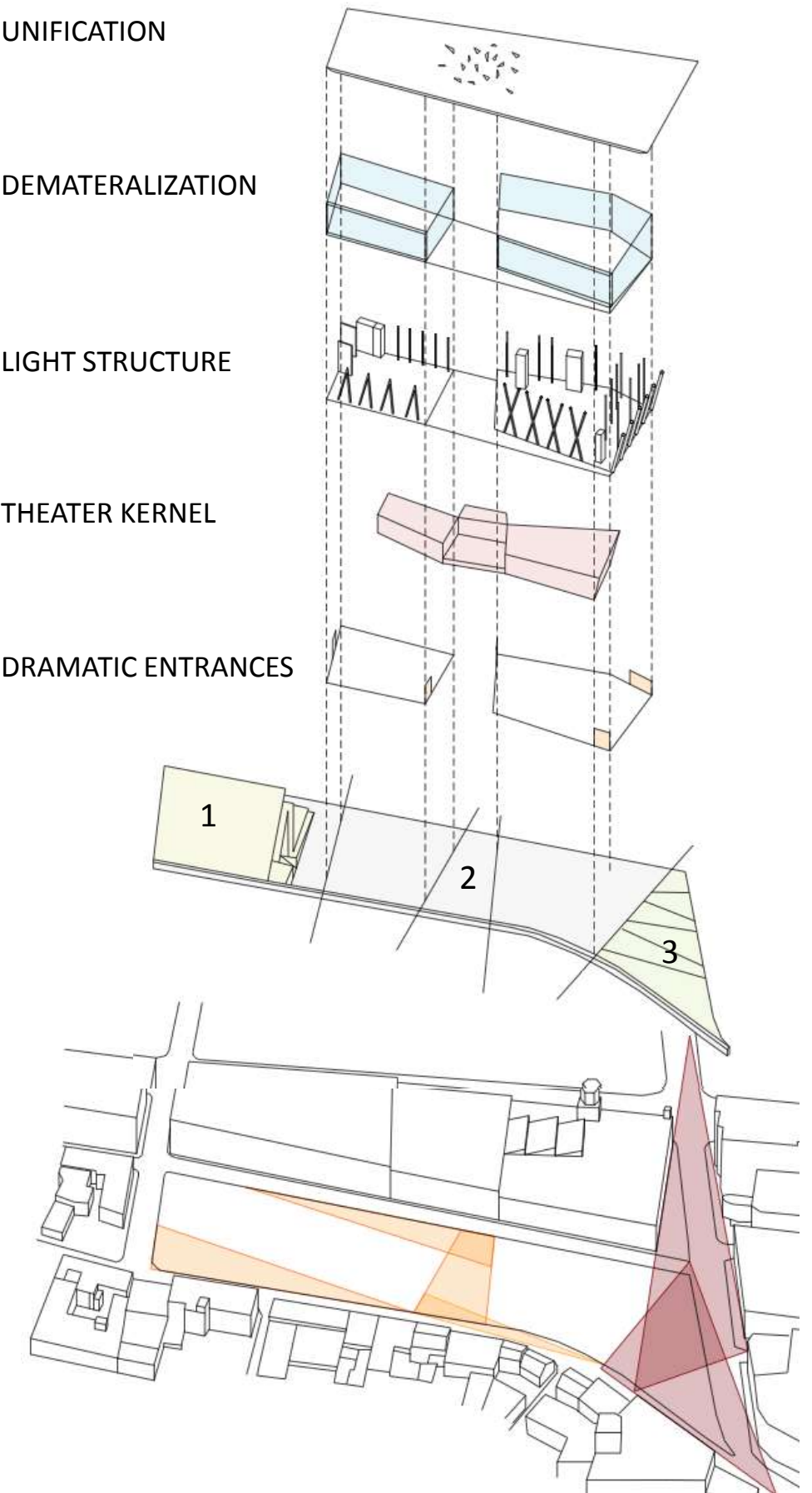
UNIFICATION

DEMATERIALIZATION

LIGHT STRUCTURE

THEATER KERNEL

DRAMATIC ENTRANCES





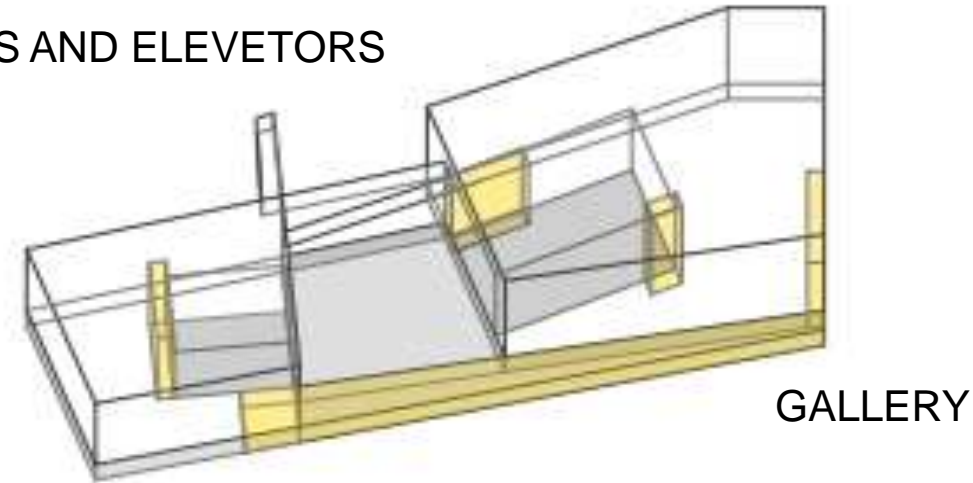
# FUNCTIONS

DEFINITION OF THE PROGRAM WITH THE "CLIENTS"

# FIRST PROPOSITION

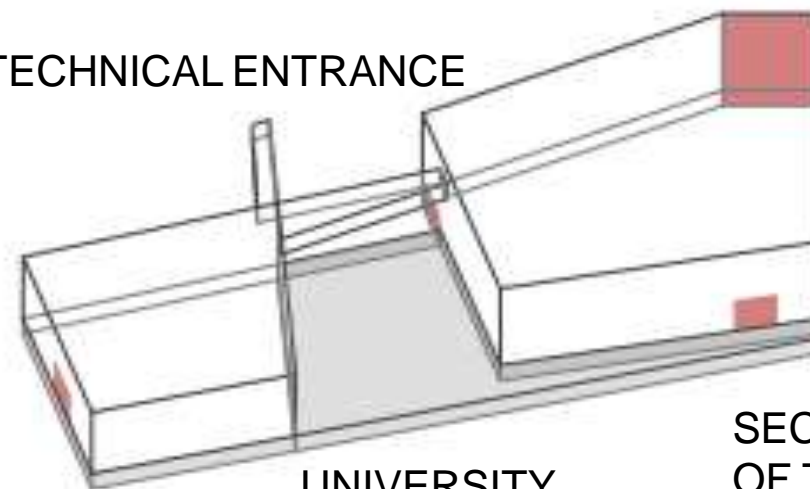
We have potentially three “clients” to define our program. The first one was the demand of the USITT for this competition, the second one was the head of the faculty and the last one was a theater student. Before discussing with the latter we suggest a first proposition of organization of the space. Then, we adapted the program in a final proposition.

STAIRS AND ELEVATORS



CIRCULATION DIAGRAM

TECHNICAL ENTRANCE



MAIN ENTRANCE  
OF THE THEATER

ENTRANCES DIAGRAM


GALLERY ENTRANCE

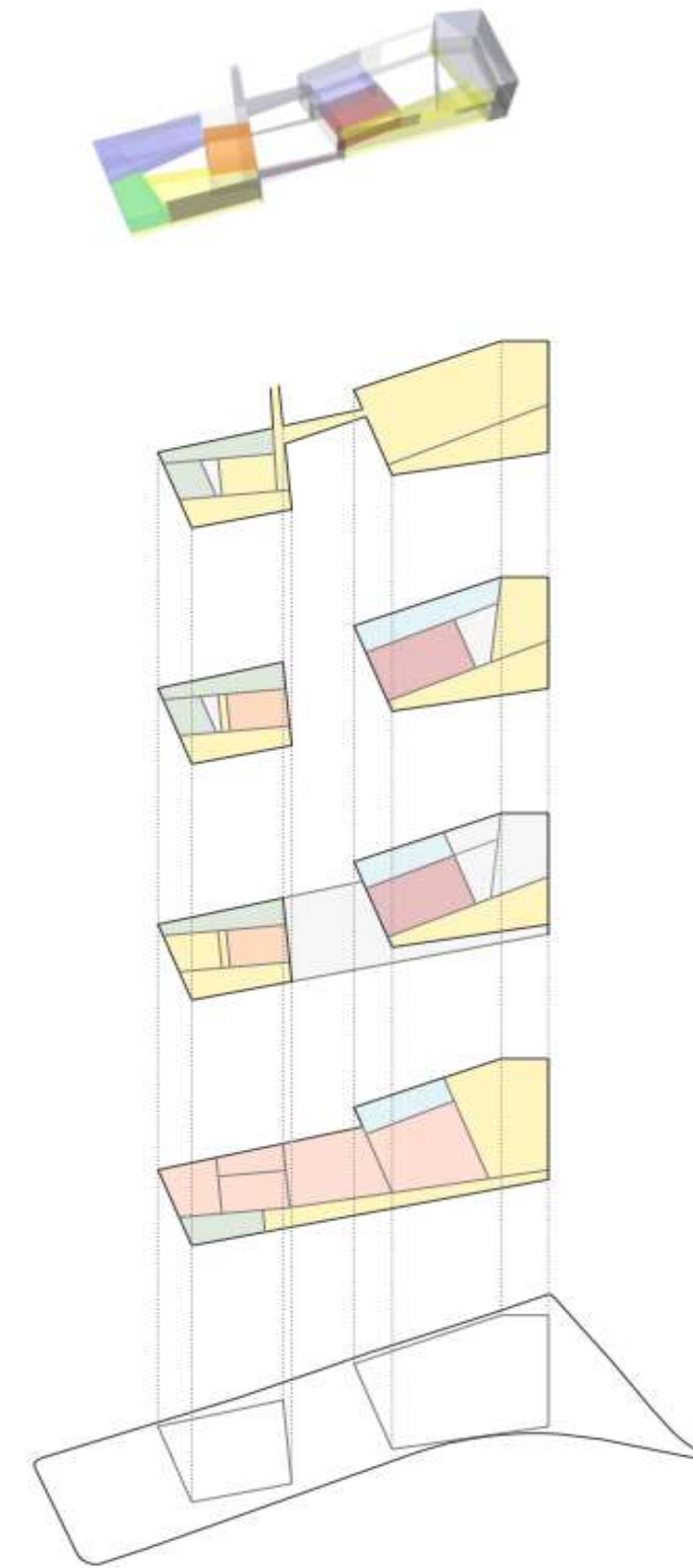
UNIVERSITY  
ENTRANCE

SECONDARY ENTRANCE  
OF THE THEATER

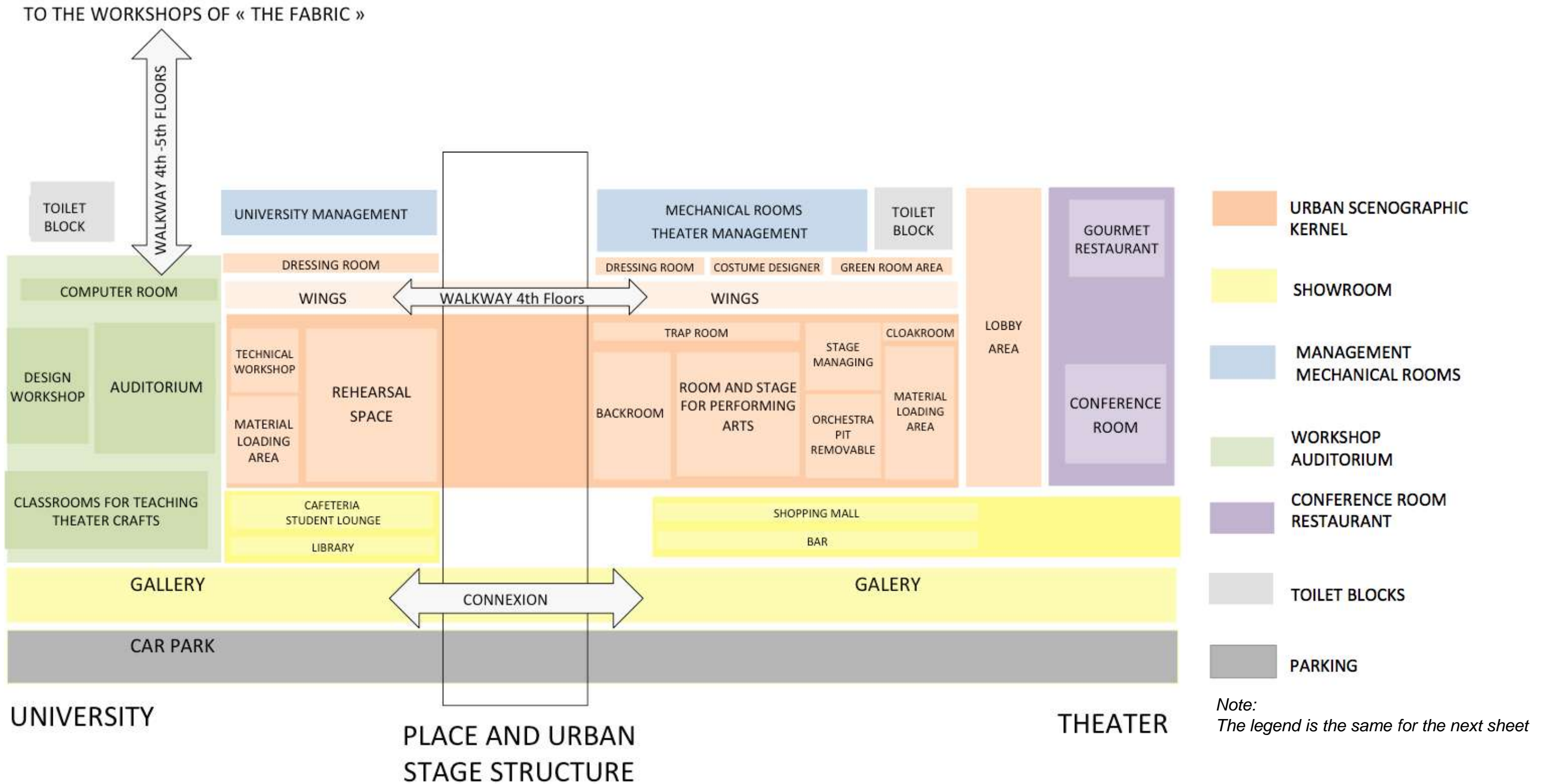


LEGEND

-  ROOM FOR PERFORMING ARTS
-  WINGS, GREEN ROOM AREA, DRESSING ROOM
-  REHEARSAL SPACE
-  LOBBY/GALLERY
-  MANAGEMENT
-  DESIGN AND TECHNICAL WORKSHOPS

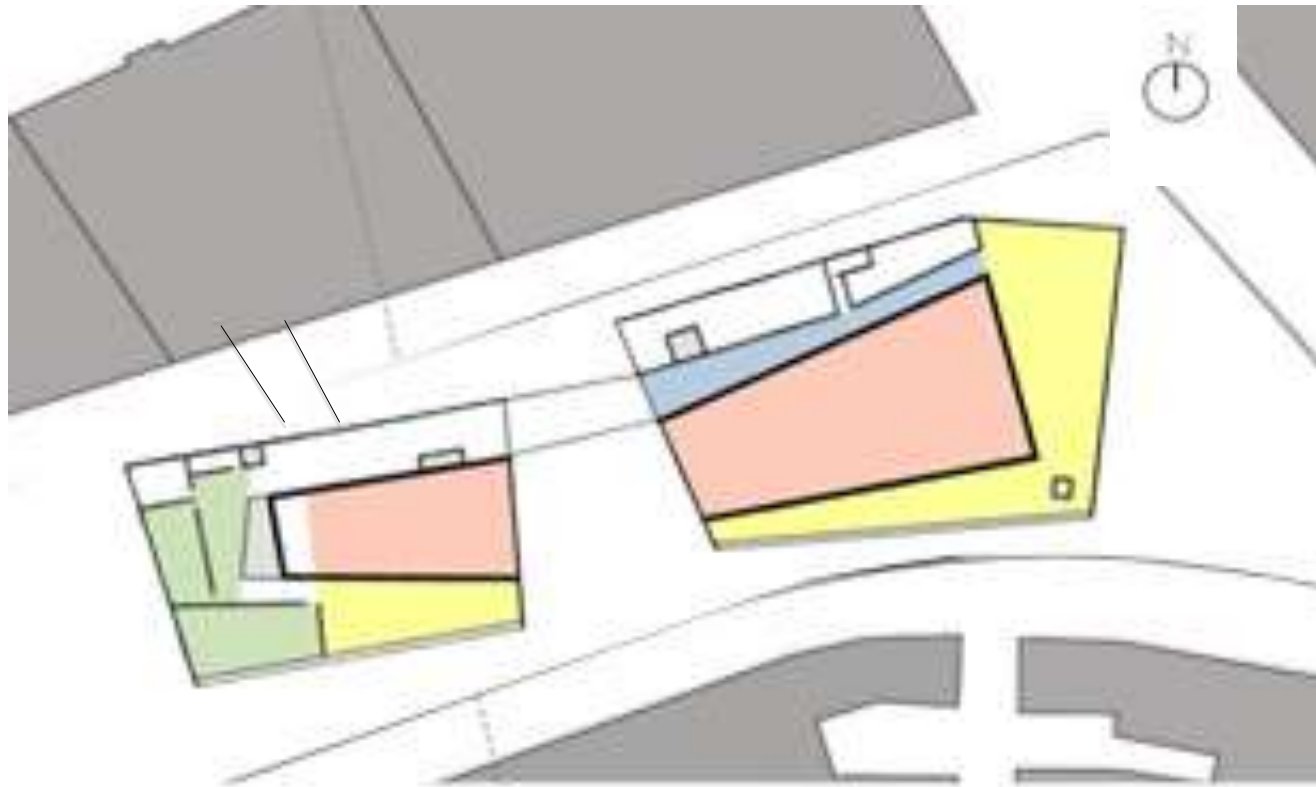


# FINAL PROGRAM



# FINAL PROGRAM

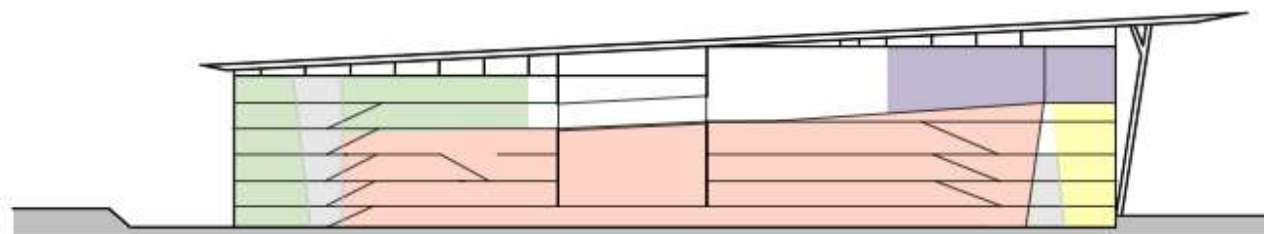
INTENTION: TURN AROUND THE SCENOGRAPHIC KERNEL OF THE BUILDING



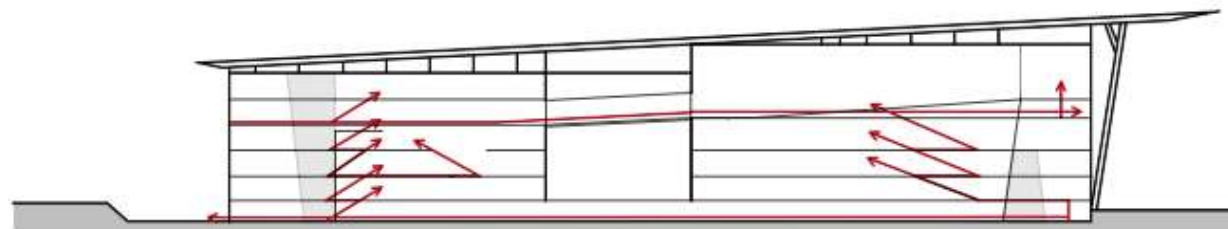
PLAN fourth floors- Conic spaces



VOLUME

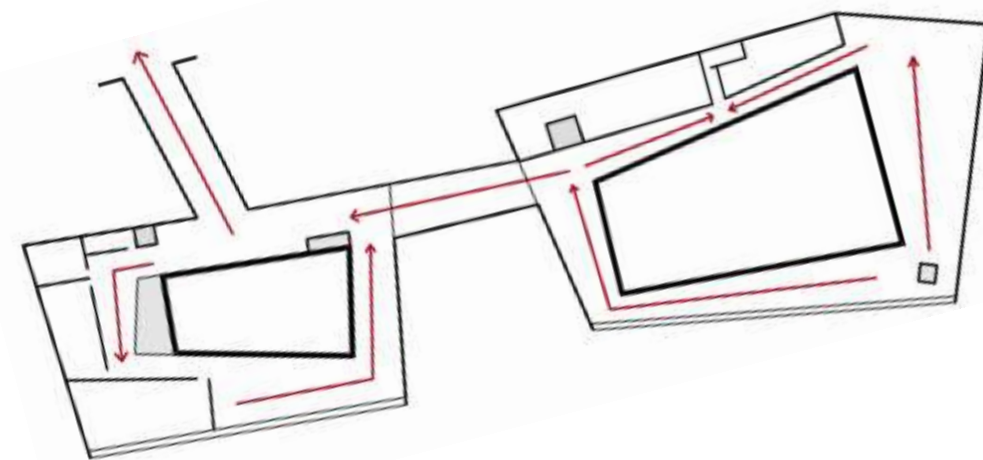


SECTION-Function- Conic forms



SECTION-Circulation-Turn around vertically

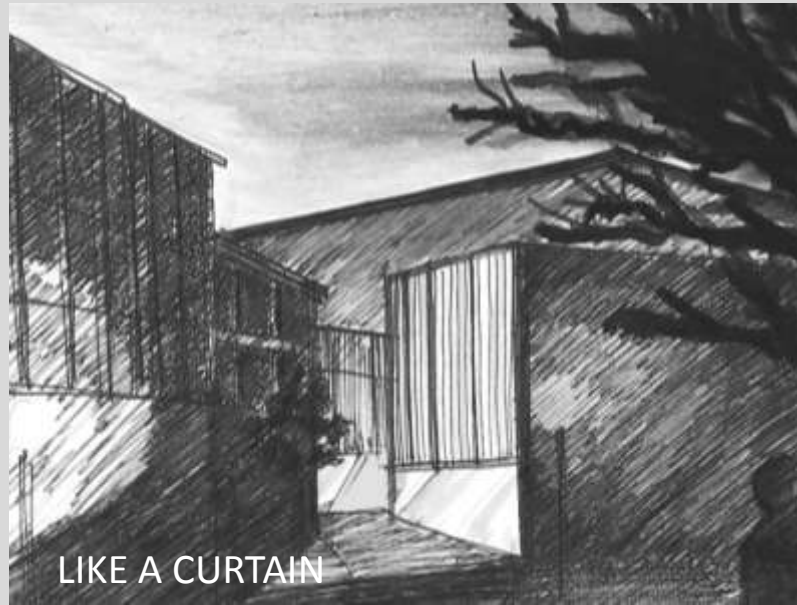
To "The Fabric"



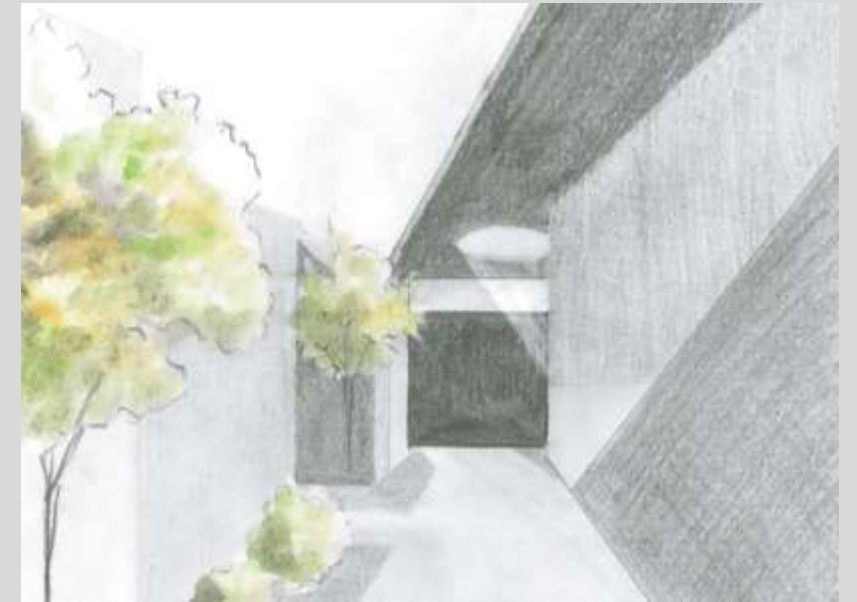
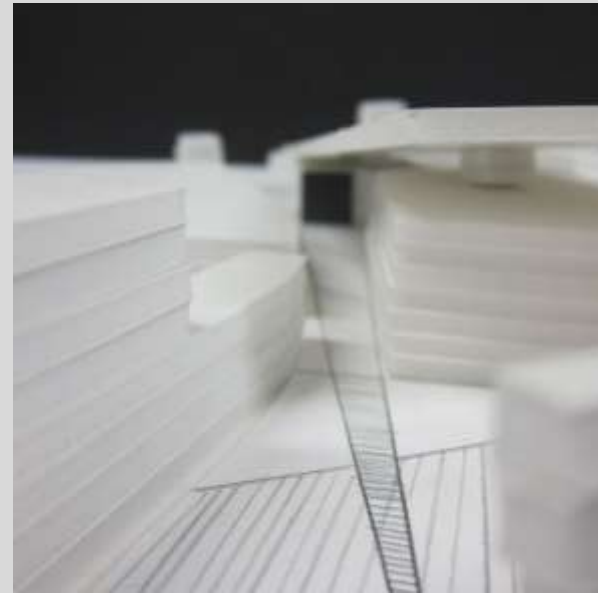
PLAN fourth floors - Circulation-Turn around horizontally

Through this booklet, we want to explain to you our architectural process of our ideal theater. Our first step was to develop our concept and we work with a lot of drawings, photos of the site, models and virtual 3D models to find the best framings of our future building and the site. These tools allowed us to explain our intentions and discuss with the theater student. Particularly, four perspectives will be shown. The left sheet show how we imagine the perspective, the right sheet show how we want to materialize.

URBAN THEATRICALITY  
PERSPECTIVES LEADING TO DRAMATIC ENTRANCES



LIKE A CURTAIN

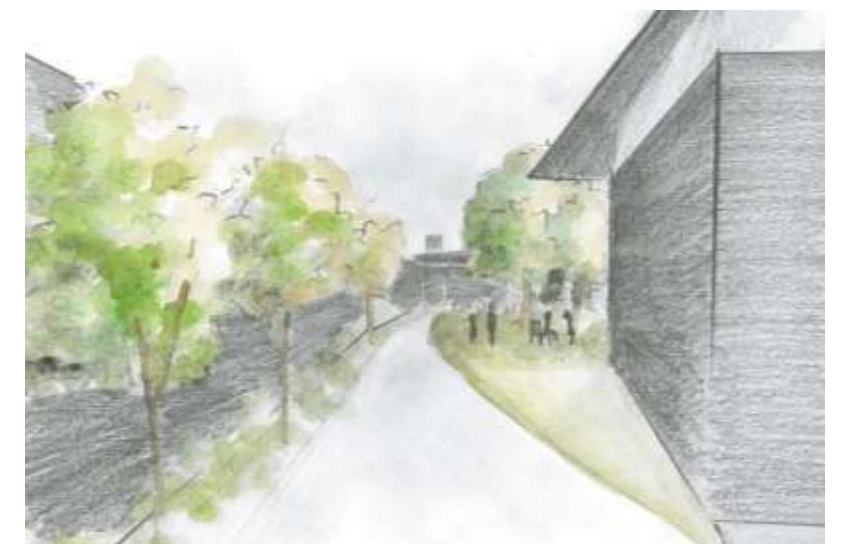
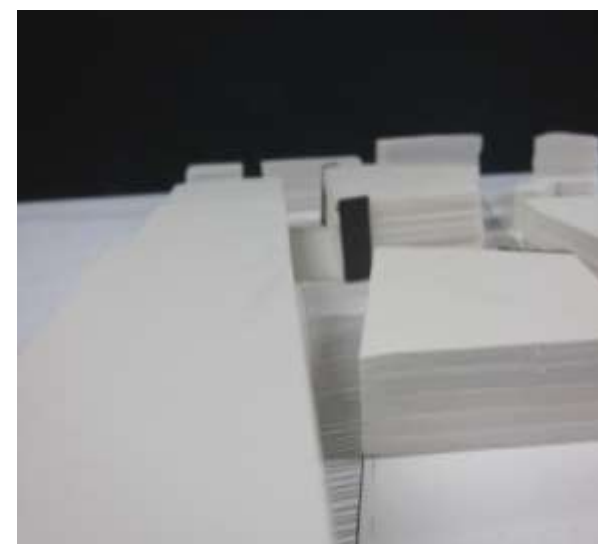


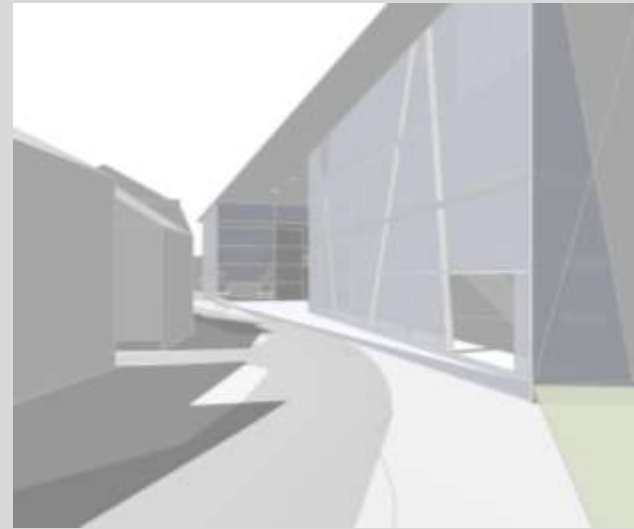
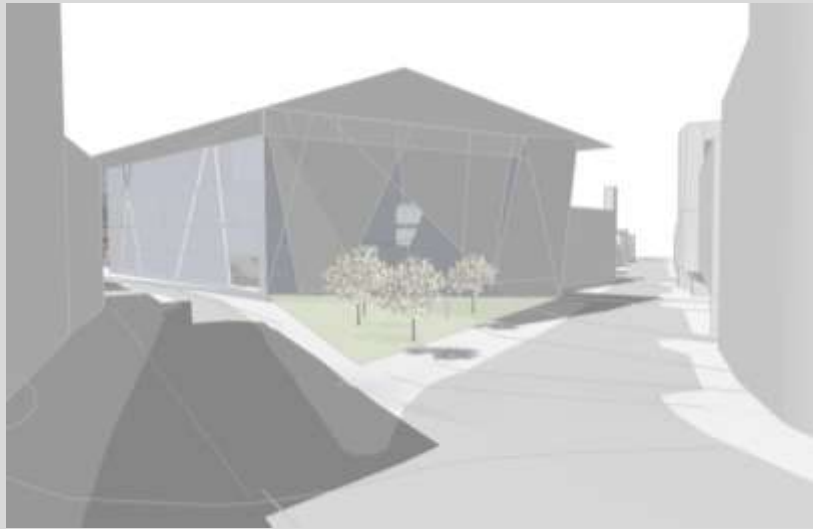
FIRST PERSPECTIVE ON SAINT- VALLIER STREET LEADING TO THE ENTRANCE OF THE UNIVERSITY

SECOND PERSPECTIVE ON SAINT- VALLIER STREET LEADING TO BIKE GARAGE AND THE STUDENT PLACE



STRUCTURE LIKE A CURTAIN-MUCEM



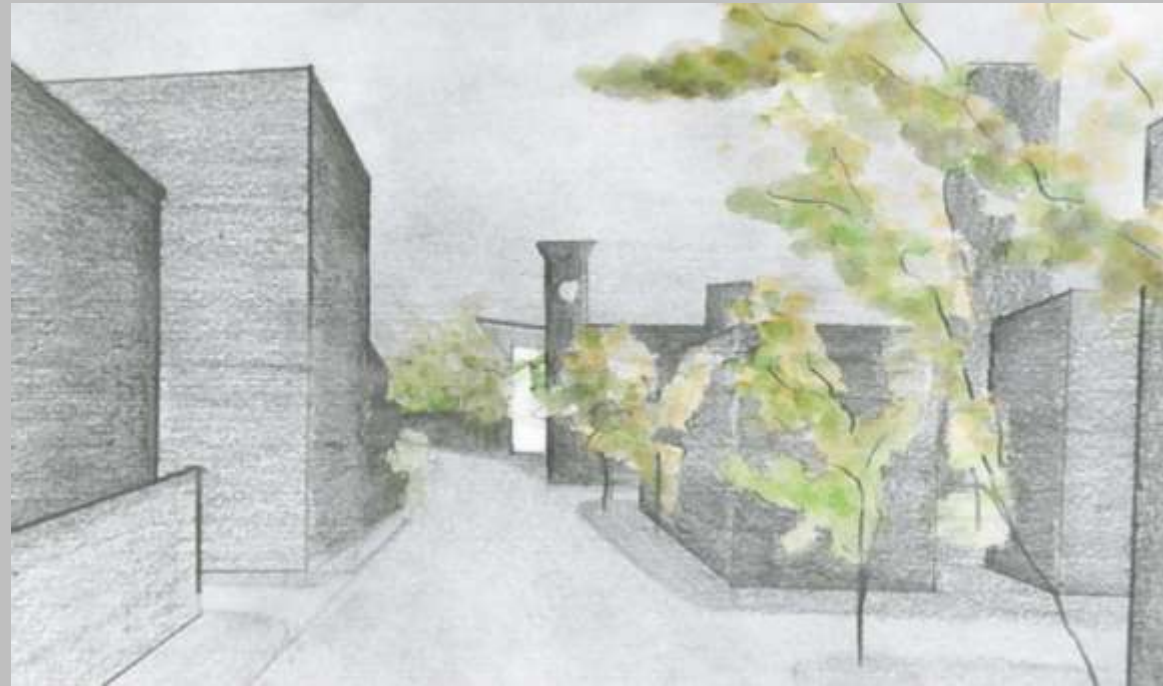
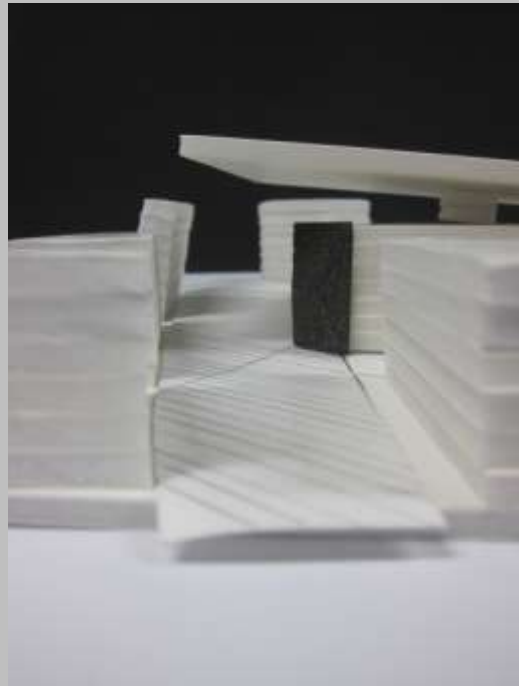


FIRST PERSPECTIVE ON SAINT- VALLIER STREET LEADING TO THE ENTRANCE OF THE UNIVERSITY

SECOND PERSPECTIVE ON SAINT- VALLIER STREET LEADING TO BIKE GARAGE AND THE STUDENT PLACE



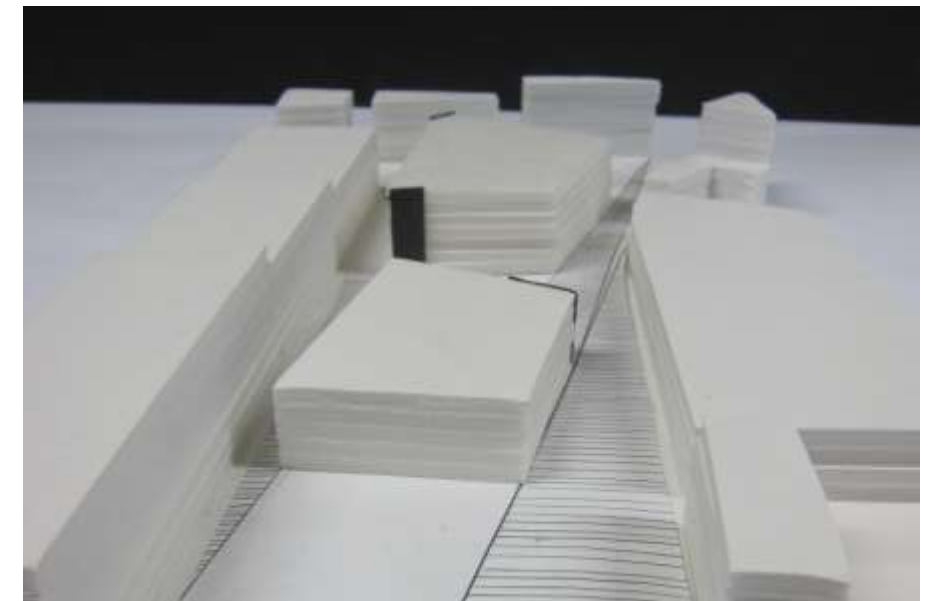
We want to give rhythm to the longer of the site and the double directivity of Saint-Vallier street by these two perspectives. There is a dense traffic on this street. We would like the showcase like a curtain we created along this street dynamise this site.



PERSPECTIVE ON DORCHESTER AVENUE LEADING TO THE ENTRANCE OF THE THEATER

SECOND PERSPECTIVE ON SAINTE-HELENE STREET LEADING TO THE TECHNICAL ENTRANCE OF THE THEATER

This is the emblematic frontage of university extension in front of the big place we created.



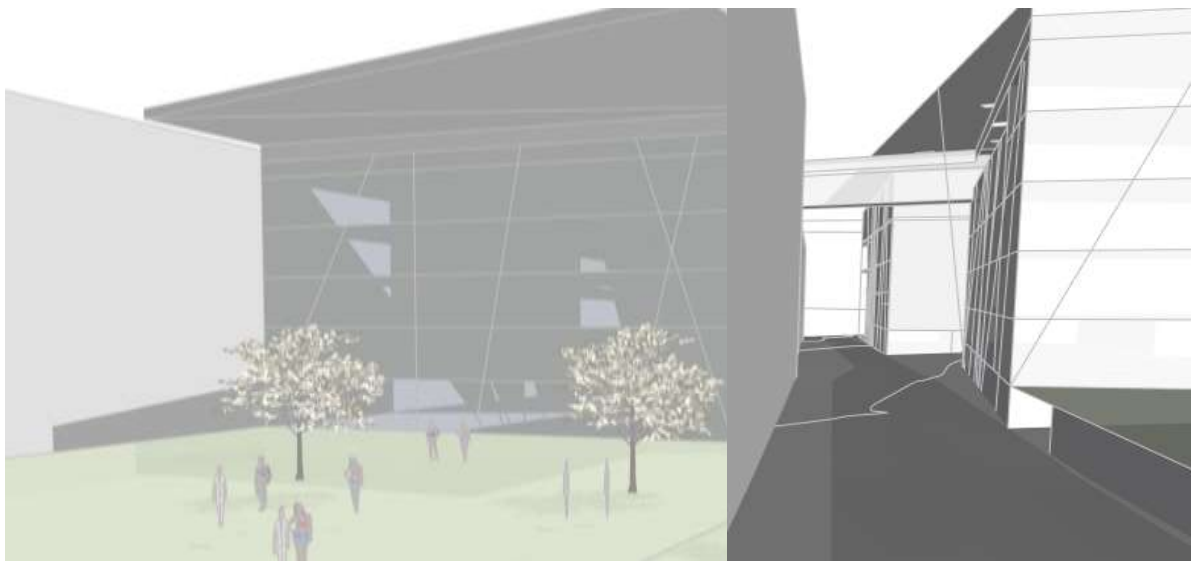




Unlike the other perspectives we created to lead to a specific entrance, this conic one was already on the site and we decided to block it by the main dramatic entrance of the theater building. The light dematerialized frontage of the building allows people to see the kernel inside the building and socialization spaces as the lobby and the gourmet restaurant.

PERSPECTIVE ON DORCHESTER AVENUE LEADING TO THE ENTRANCE OF THE THEATER

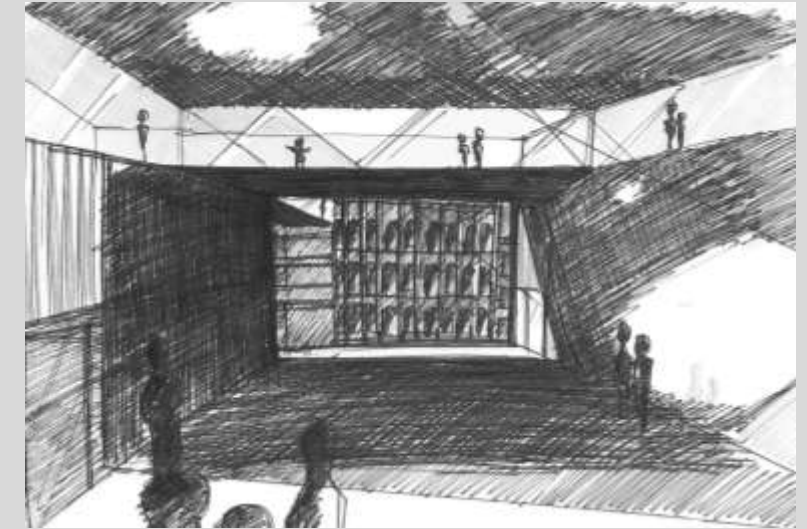
SECOND PERSPECTIVE ON SAINTE-HELENE STREET LEADING TO TECHNICAL ENTRANCE OF THE THEATER



Our project involved into three steps. The first one was to define the concept, the next one was to materialize the project and the last one was to work tectonic details. For the first one, discussing with the theater student allowed us to imagine better the world of performing arts. Moreover, the latter shared her experiences in theater, architectural references and videos with us.

At our first project critic with our theater student in the audience, the theater student's teacher suggested us to develop more our intentions to open the stages of the rehearsal space and the performing arts room on the public space. Then, it became a guiding line for our conception, we define the place and the rooms "the Kernel" of the project.

A PLACE FOR PERFORMING ARTS  
THE SCENOGRAPHIC KERNEL OF THE THEATER



THE HEART OF THE BUILDING-PUBLIC SPACE AND PLACE FOR PERFORMING ARTS

REFERENCE:PUBLIC SPACE TEATRO LA LIRA, RCR-ARQUITECTES

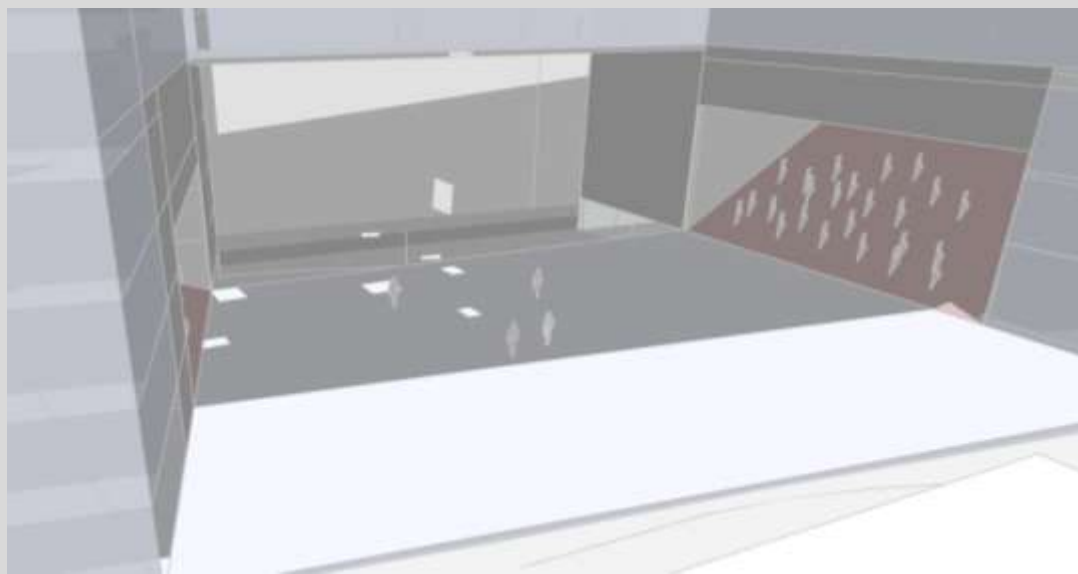




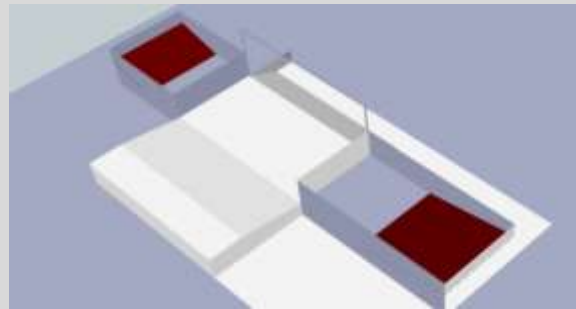
This area is daily used as a urban place but it can be considered as the place of performing arts when the two big doors of the rehearsal room and the backroom are opened. Black color on this urban place refers to “black box” of theaters. This is a frame of an historical frontage of “The Fabric”. Conical opening in the roof create magical atmosphere on the place.

THE HEART OF THE BUILDING-PUBLIC SPACE AND PLACE FOR PERFORMING ARTS

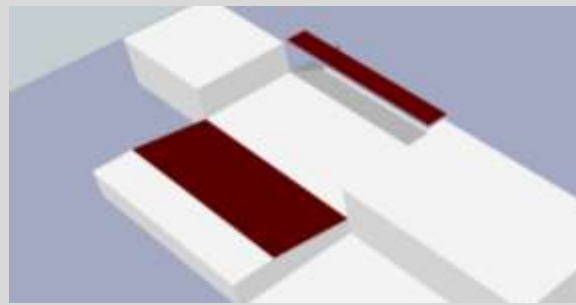
EVOLUTION OF THE 3D VIRTUAL MODEL



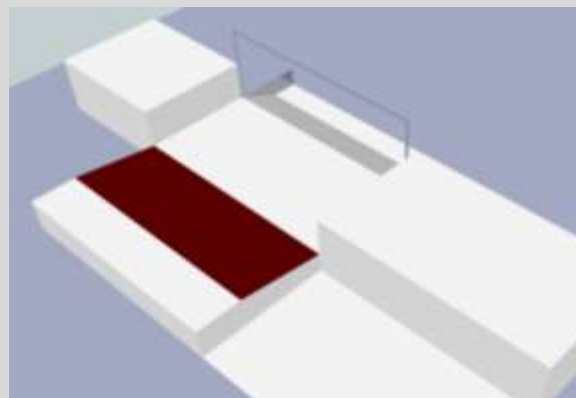
THE KERNEL OF THE IDEAL THEATER - URBAN THEATRICALITY - SCENOGRAPHIC CONFIGURATIONS



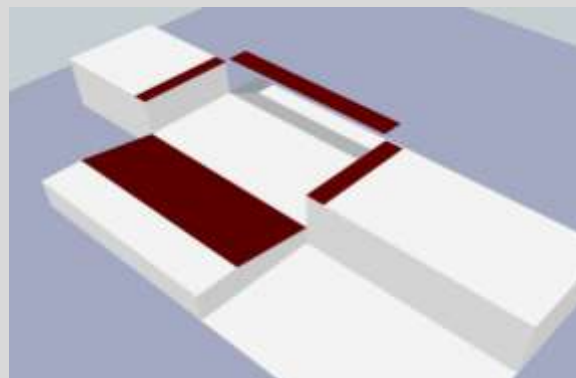
FRONTAL ROOMS



BI-FRONTAL



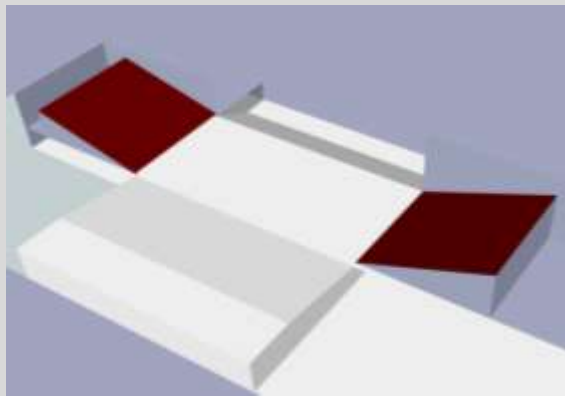
FRONTAL PLACE



ARENA



POSITION OF THE PLACE ON THE SITE



THE PLACE CAN BE A CONCERT HALL OR A THEATER  
.. OR A PLACE FOR A CHOIR OR AN OFFICIAL SPEECH

