

THE JOURNEY

L'Isola Tiberina, Rome

The Travellers: Carmen, Francesca and Yahan



Awareness



Solidarity





Guidance

Enlightenment



“I am white, german, born in a rich land with the correct pass. I feel the moral duty, to help those who do not have the same chances.”

- Carola Rackete, Sea Watch 3 Captain, 2019



VERIDITA' della valle Tibertina. A. Anni delle costruzioni del
Tempio di Esculapio e su questi si vede la Piramide di S. Pietro
che s'innalza in quella di cui sono il corpo e la base. B. Chiesa
di S. Andrea e l'Orto di S. Pancrazio. C. Ponte, detto il Ponte
quattro archi. D. Ponte, detto il Ponte di S. Pietro. E. Ponte di S. Pietro.



A BOAT

VEDUTA dell'Isola Tiberina. A. Anni delle costruzioni del
Tempio di Esculapio e su questi si vede la Piazza della Pigna e di
San Tommaso d'Aquino. B. Veduta del Palazzo del Senato e del
Palazzo di San Marco. C. Veduta del Palazzo di San Marco.
D. Veduta del Palazzo di San Marco. E. Veduta del Palazzo di San Marco.
di Giovanni B.

Lifeboats

Lighthouse

Lifeboats

powerless

Lighthouse

rising up

Lifeboats

**powerless
uncomfortable**

Lighthouse

**rising up
awareness**

Lifeboats

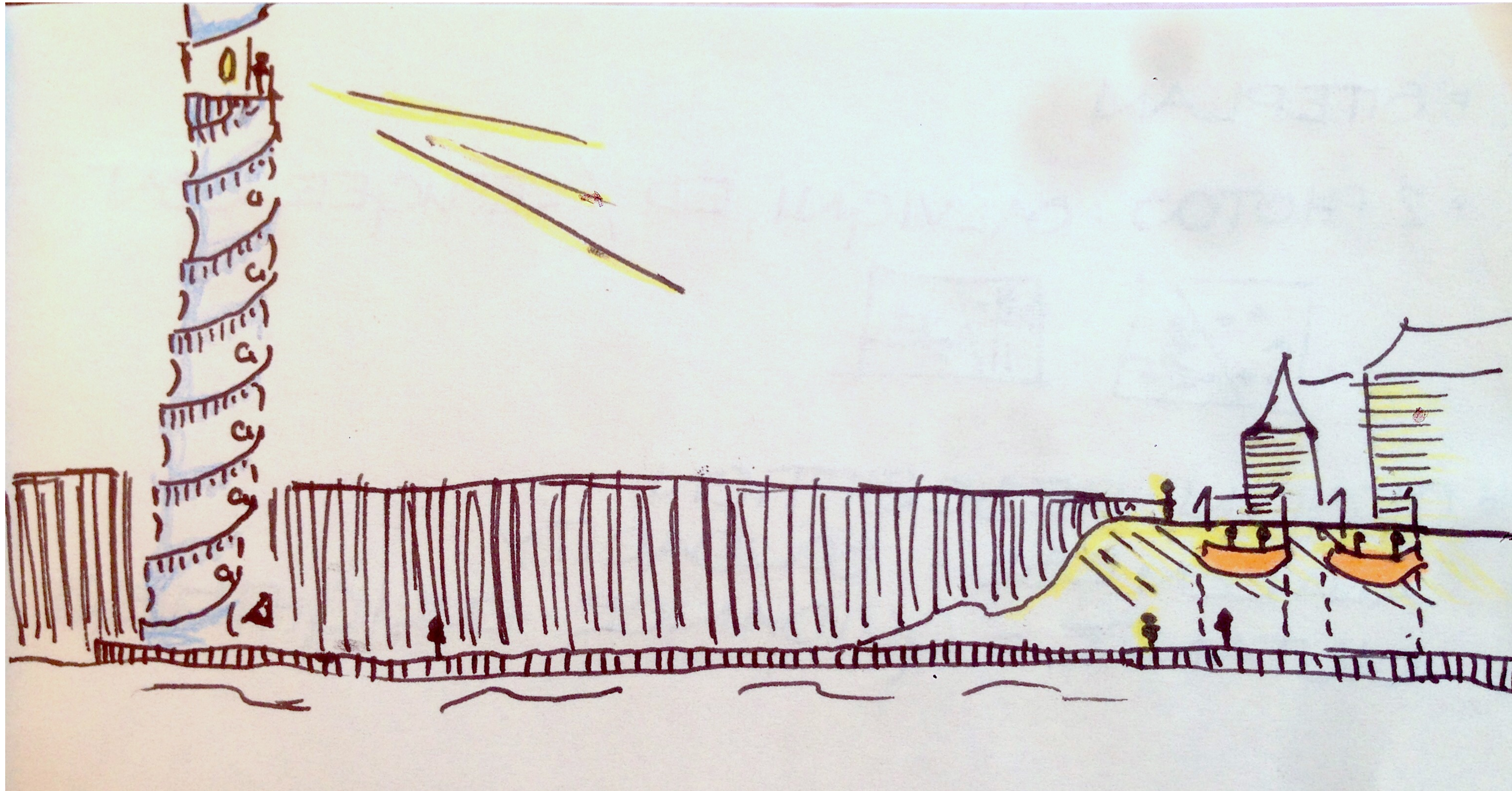
**powerless
uncomfortable
empathy**

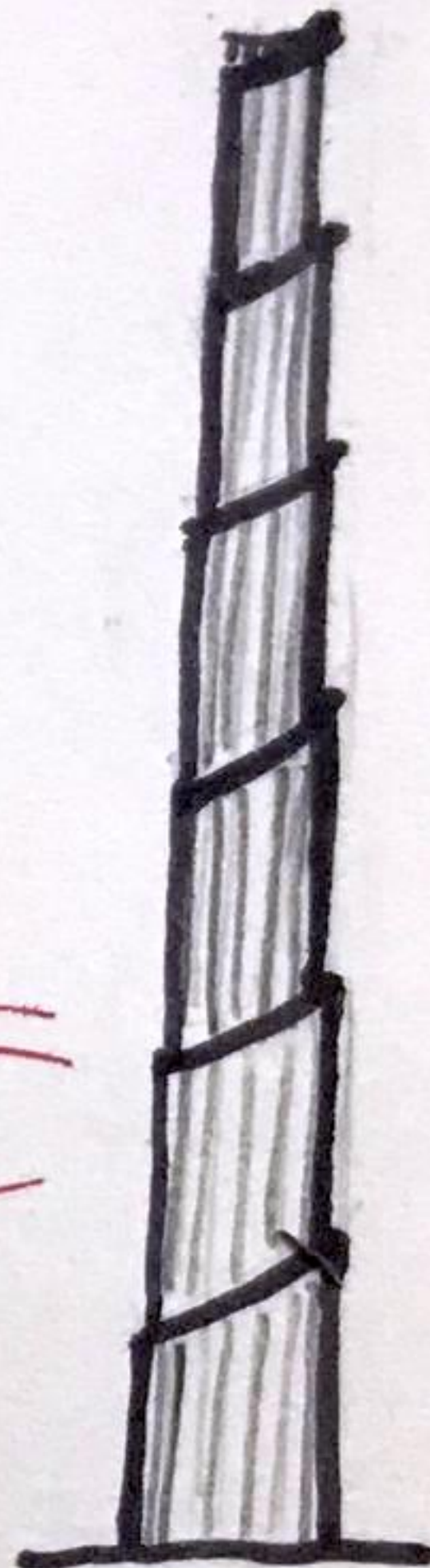
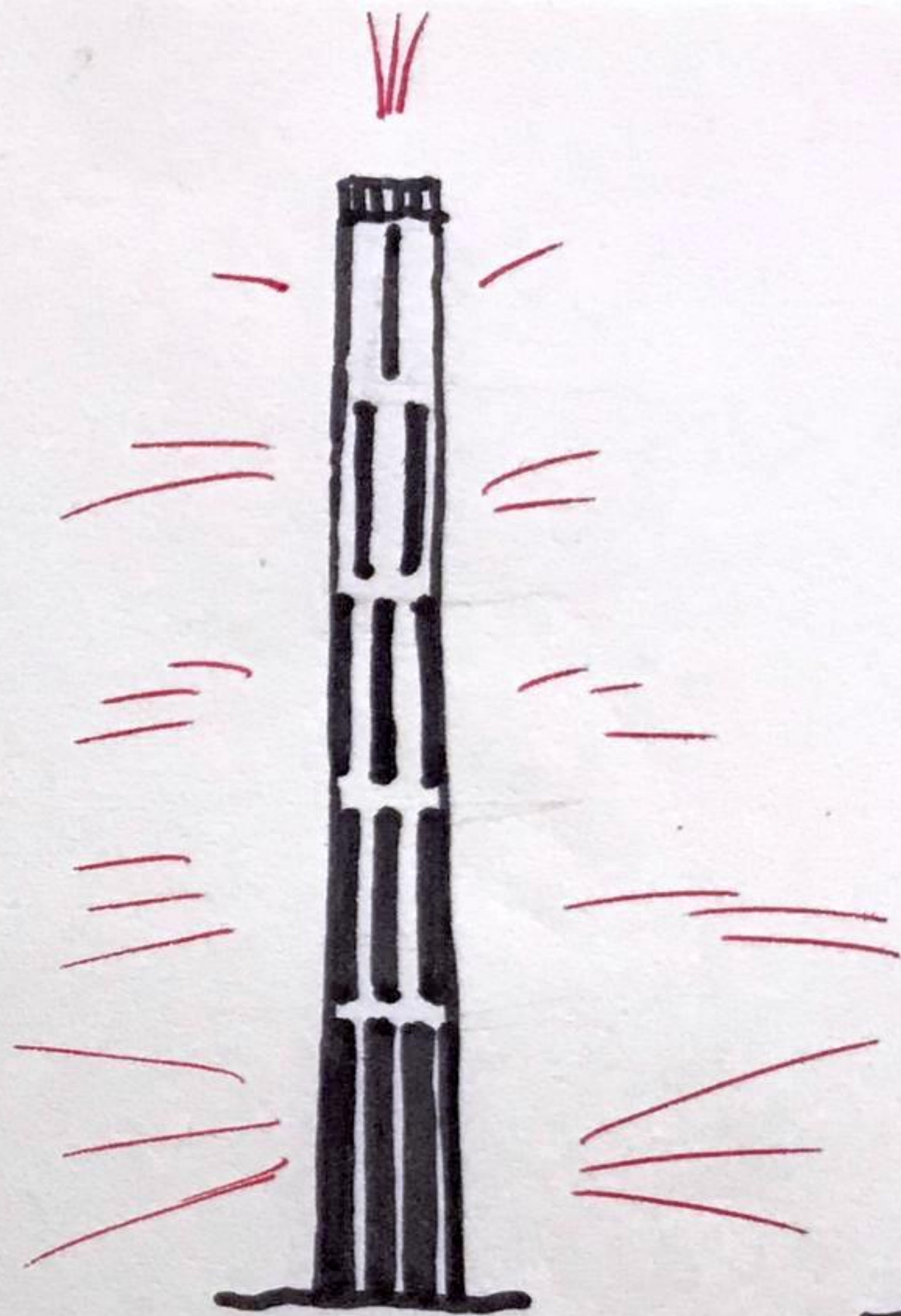
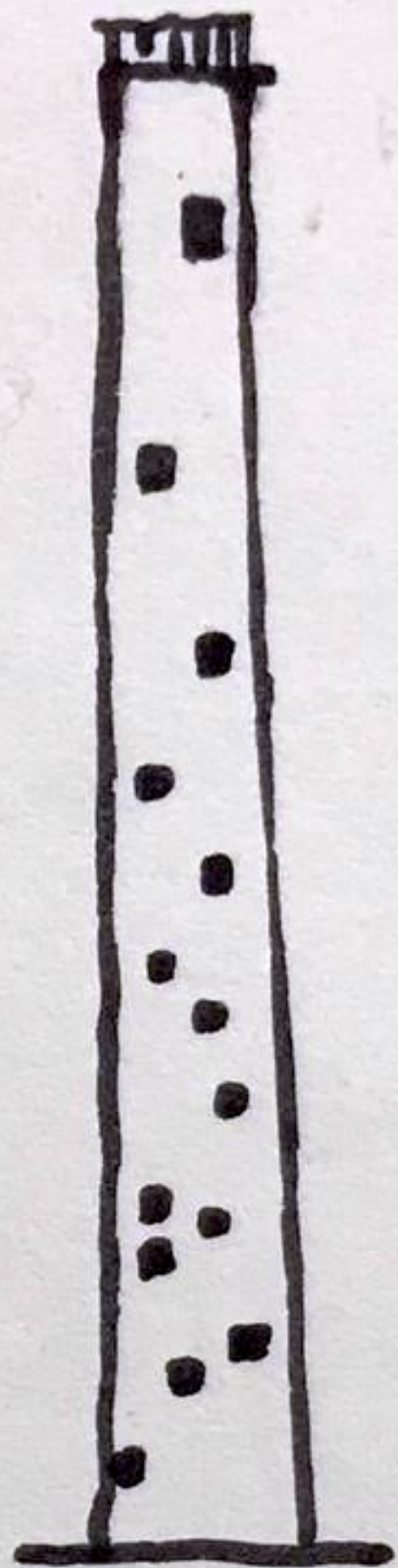
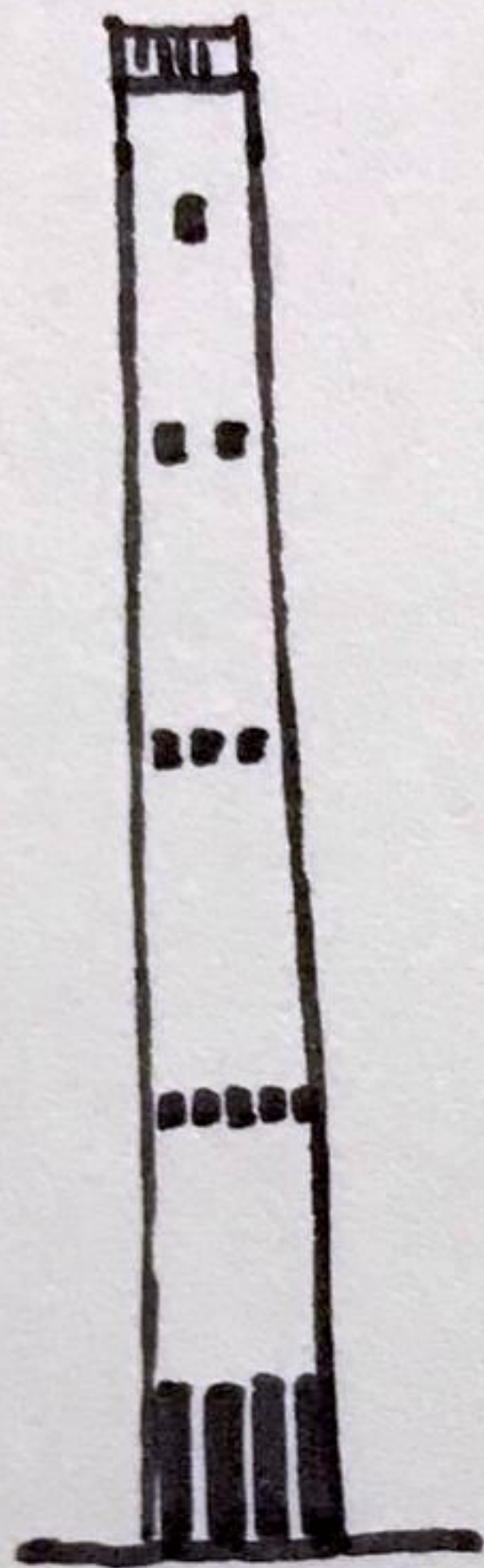
Lighthouse

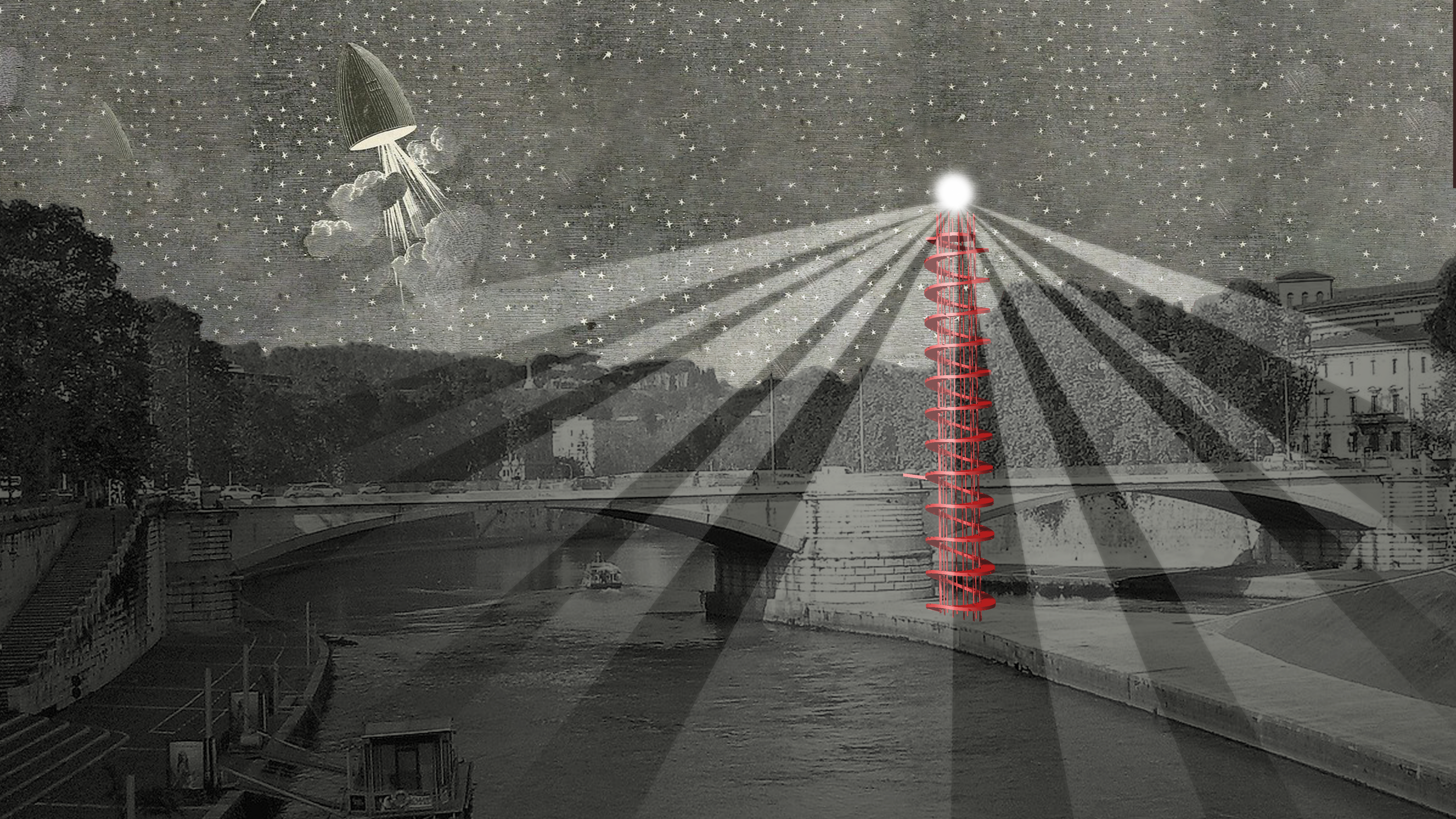
**rising up
awareness
solidarity**

The Lighthouse



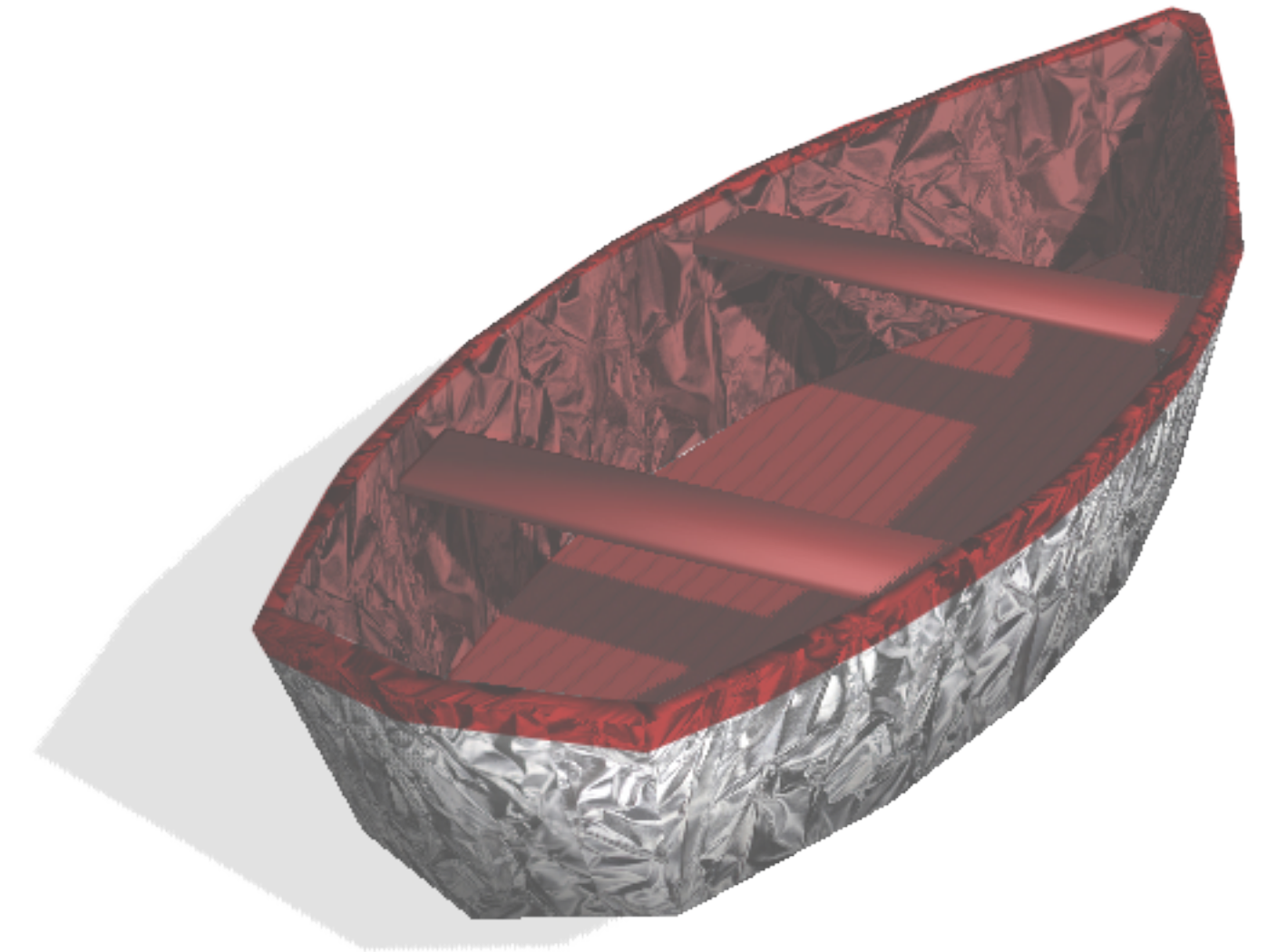


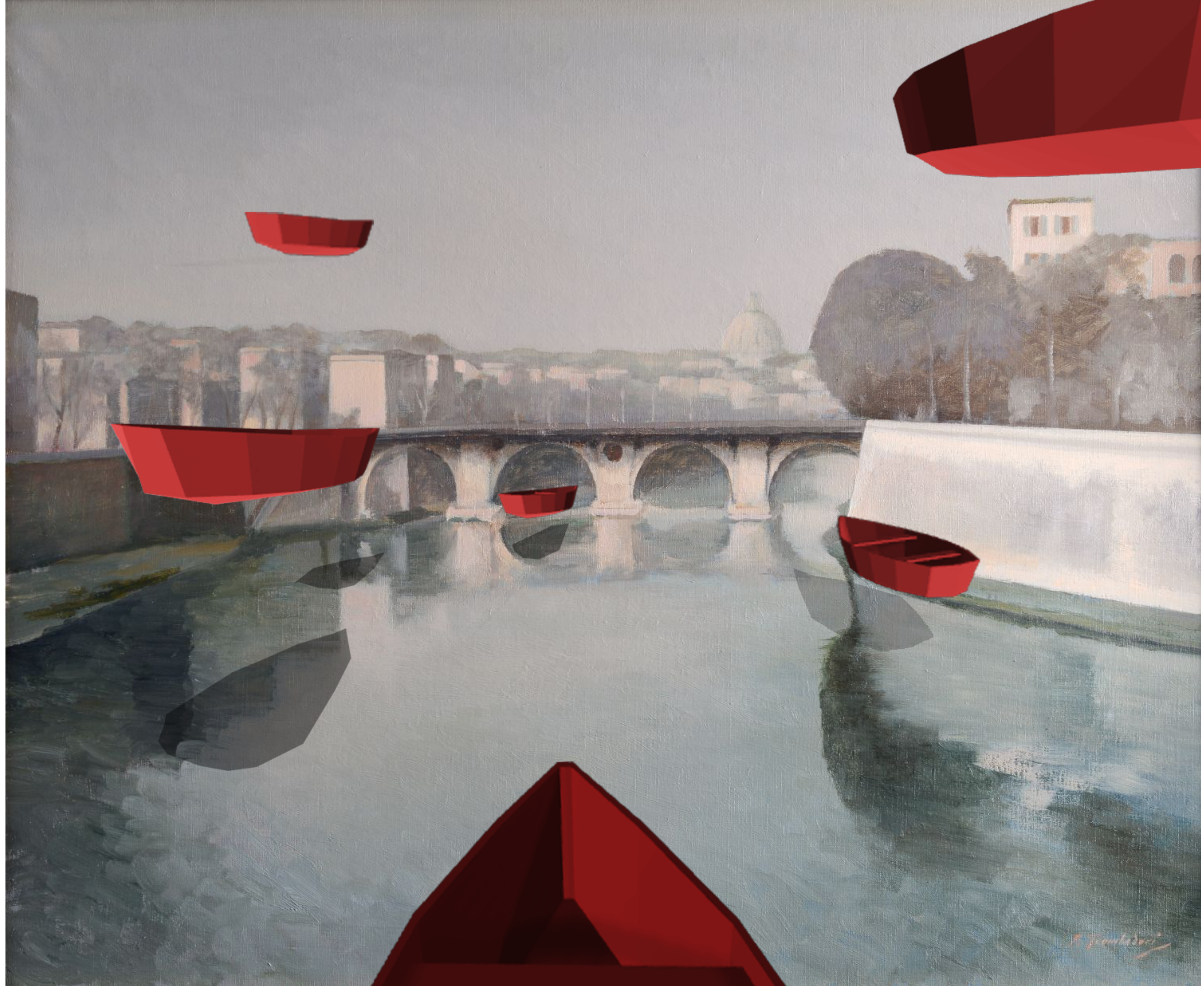


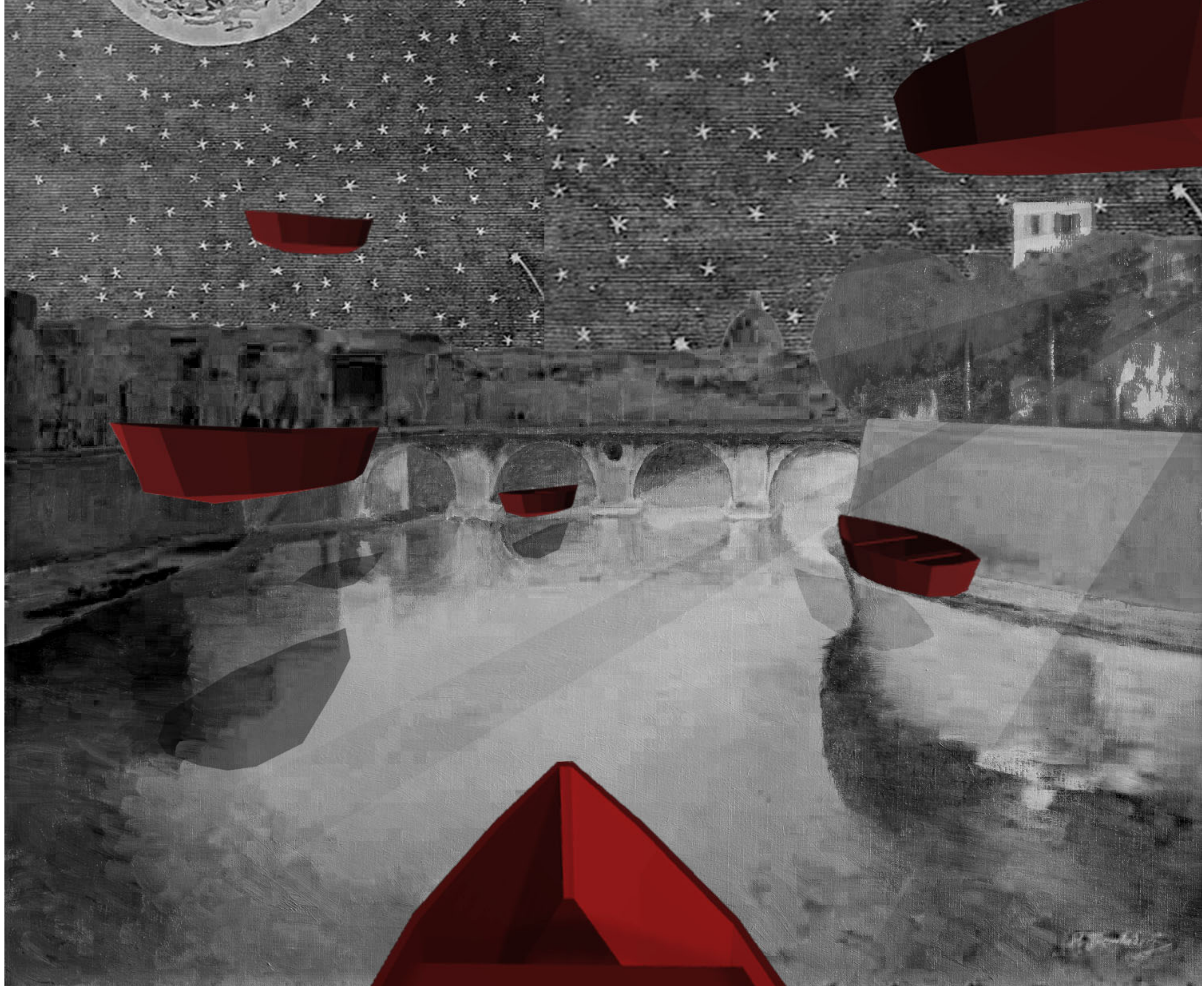


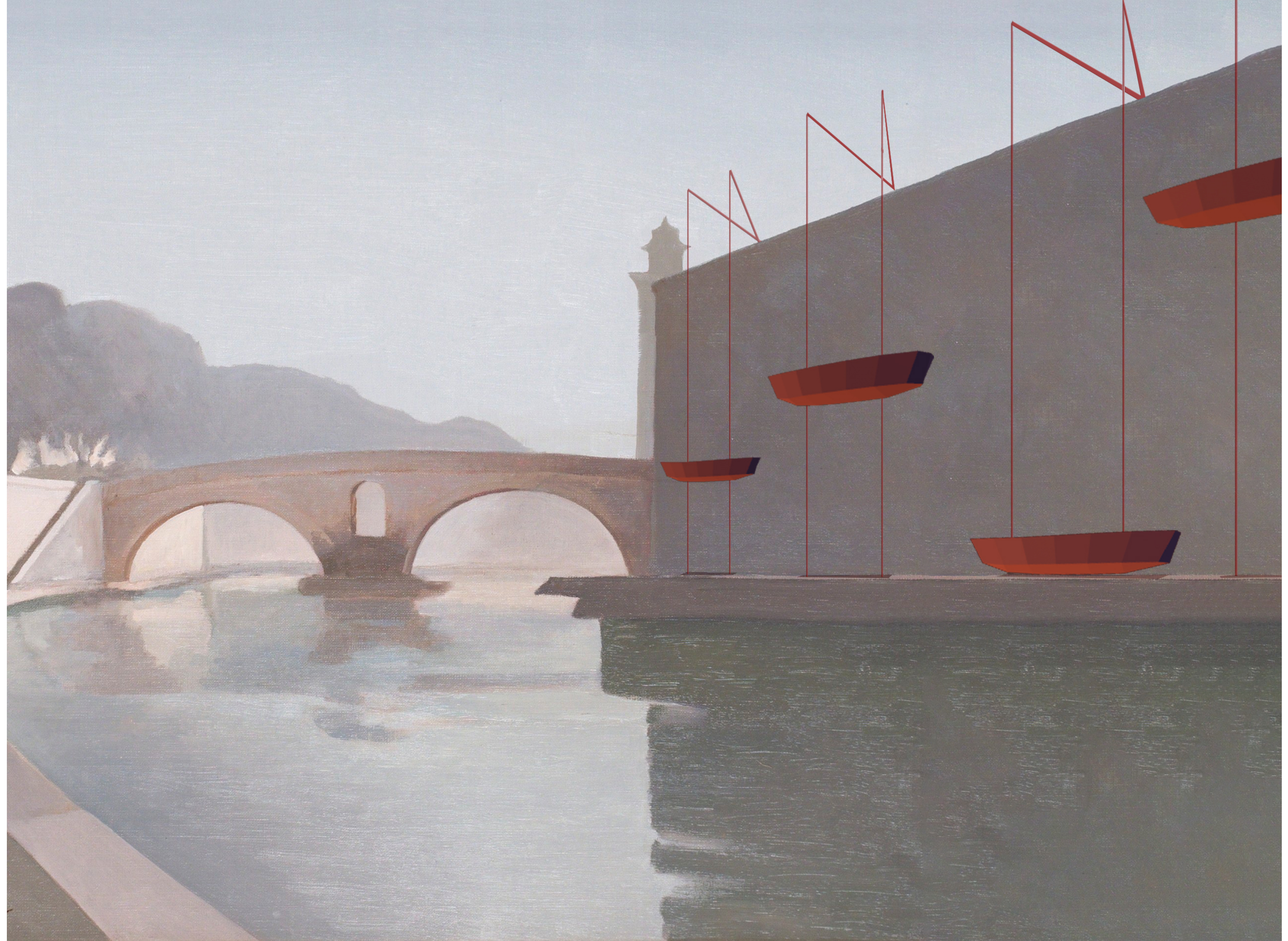
The Lifeboats











“Better to die at sea than in Libya. At sea you only die once, if you stay in Libya it is like dying every day“

- Bakary, 16 years old