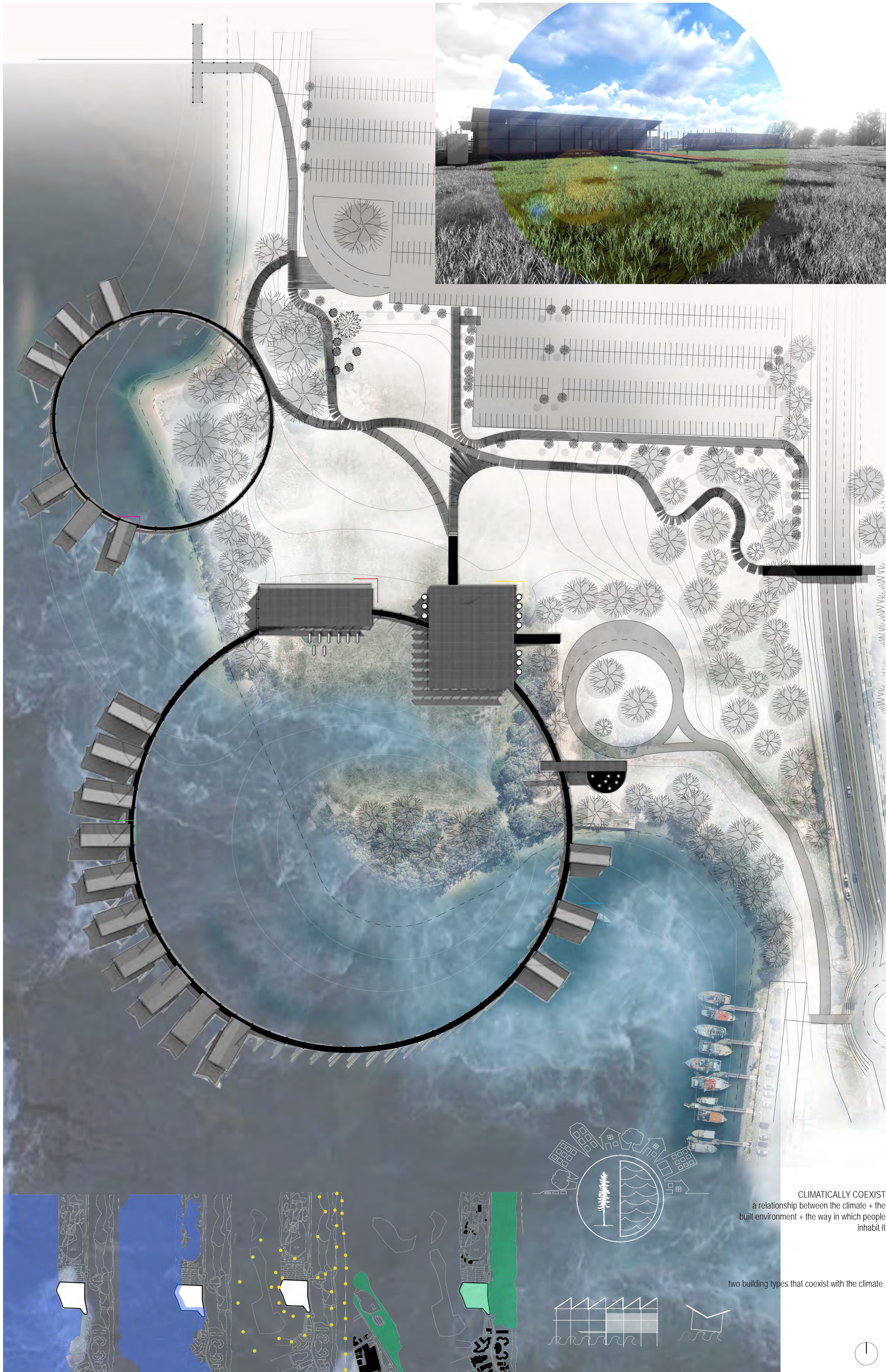
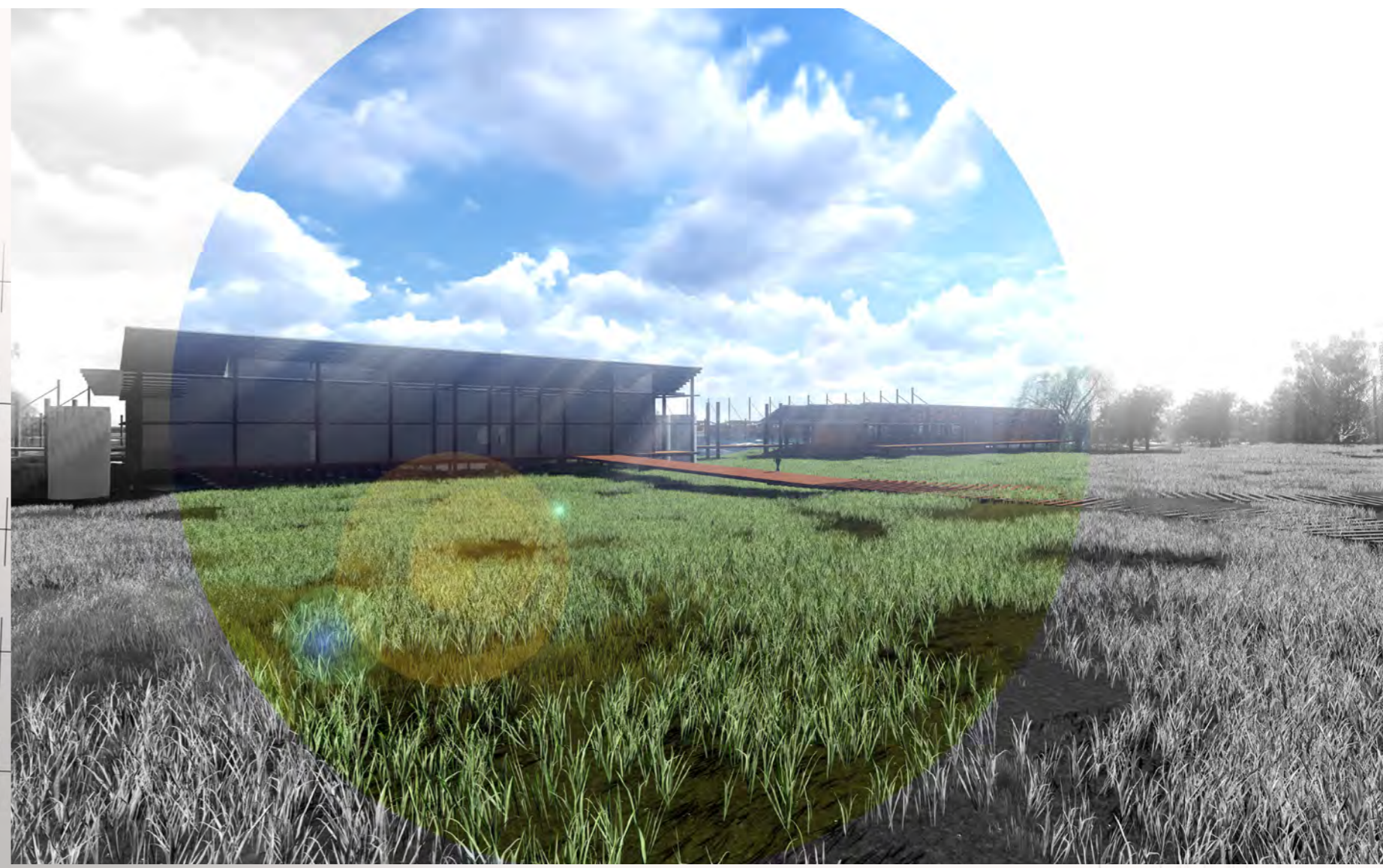
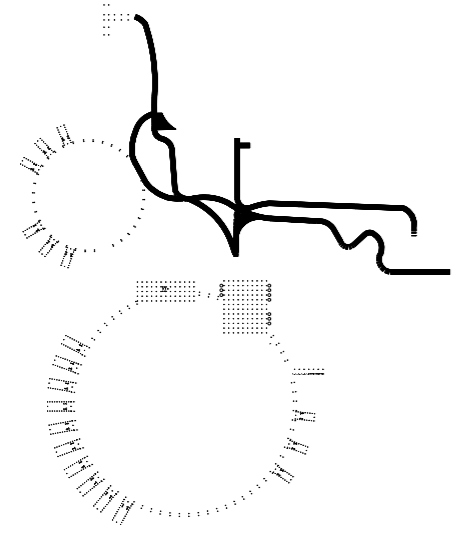
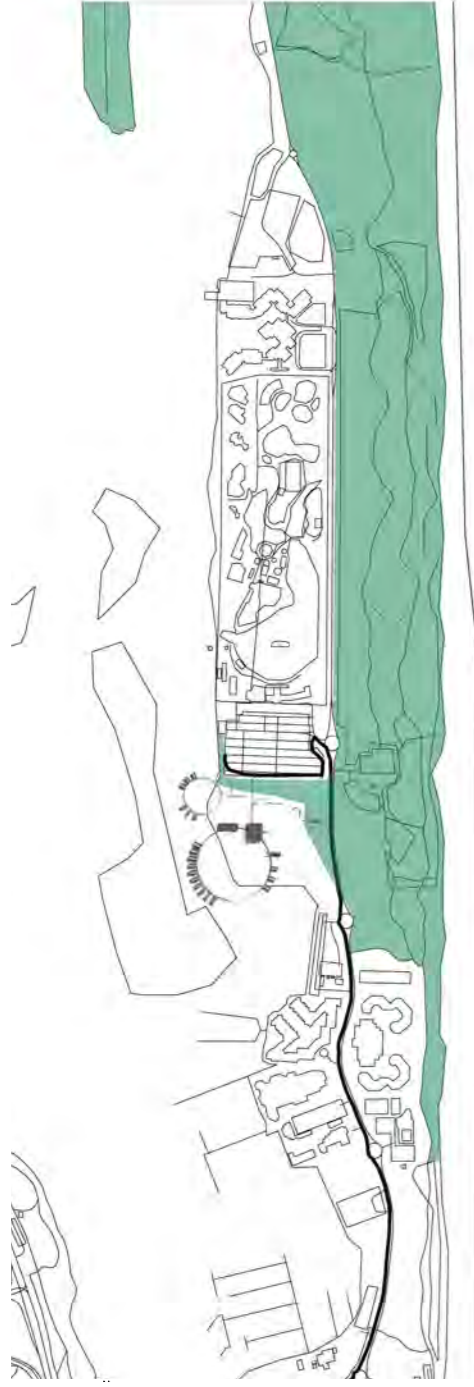


conceptual masterplan
long term:
the spit - national park



CLIMATICALLY COEXIST
a relationship between the climate + the
built environment + the way in which people
inhabit it

two building types that coexist with the climate

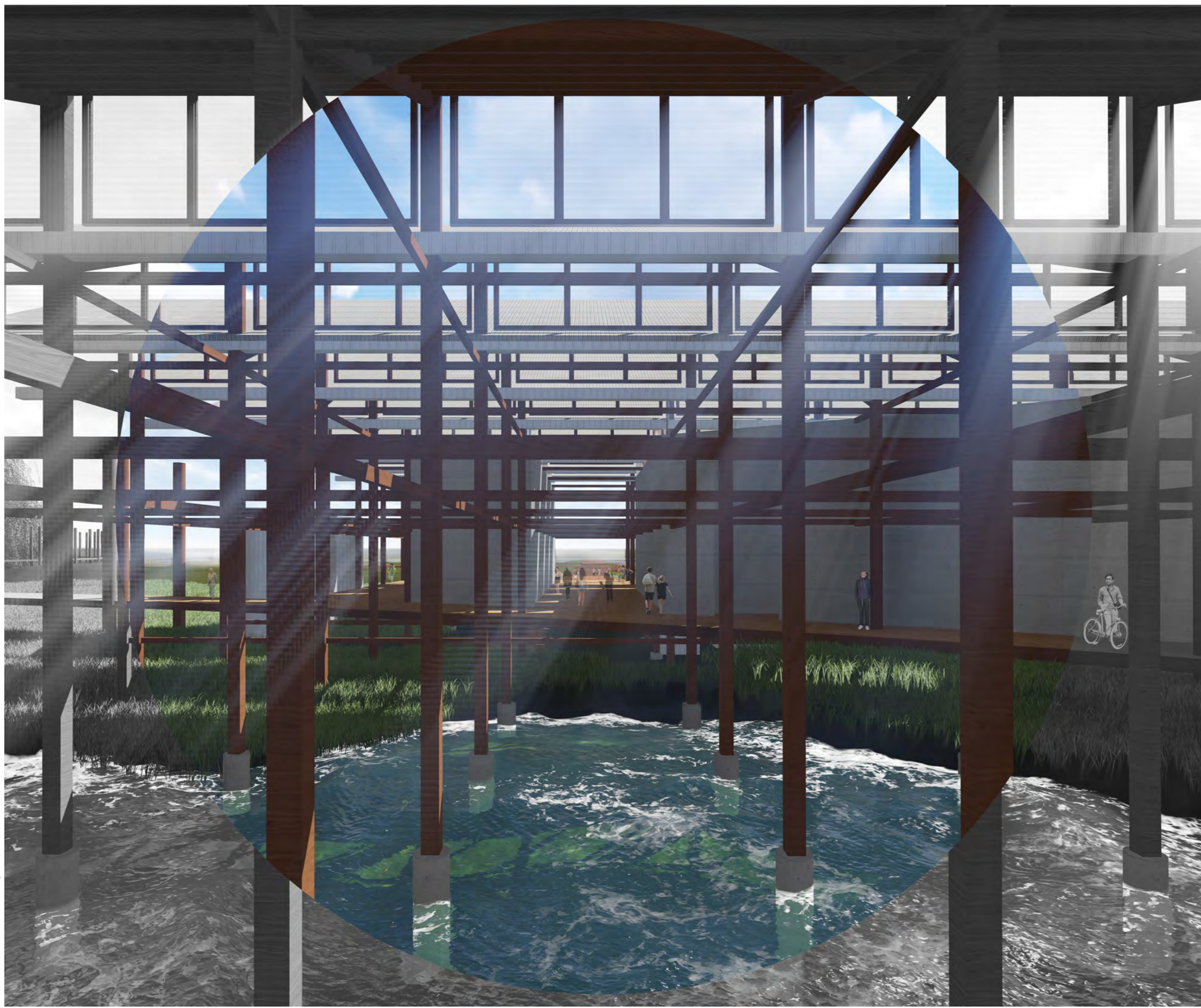
rising sea level's + increasing extreme climate

hive of outdoor activity

current lack of integration between natural +
built



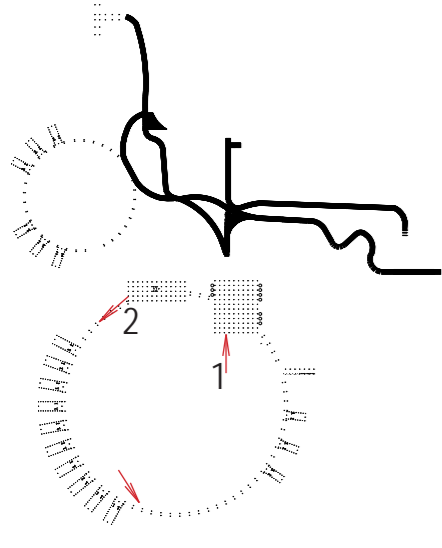
site plan 1:1000



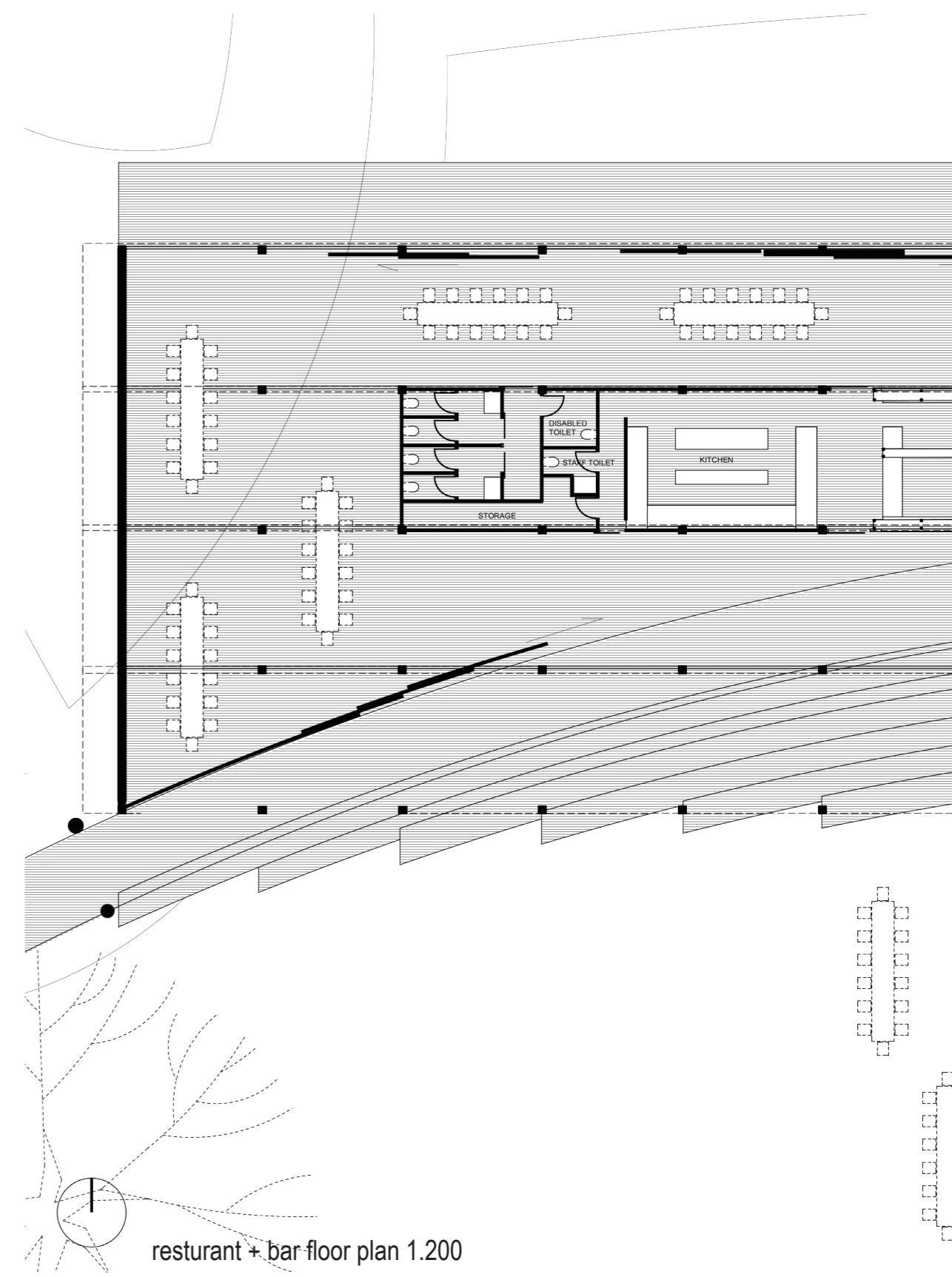
1



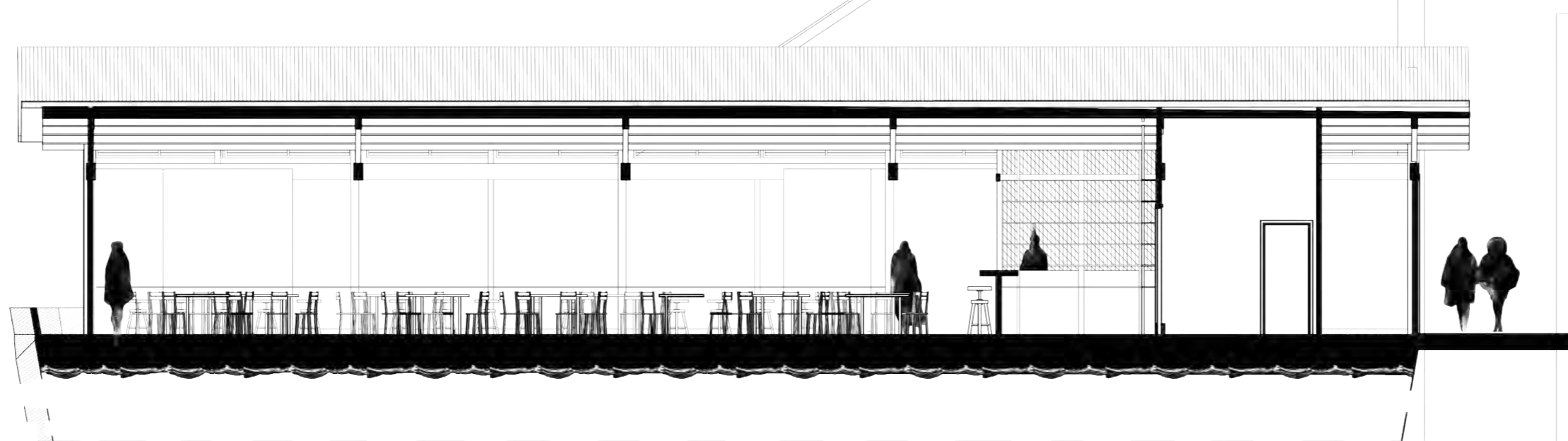
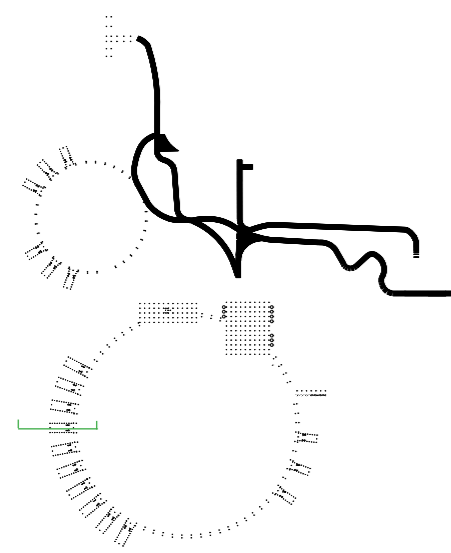
2



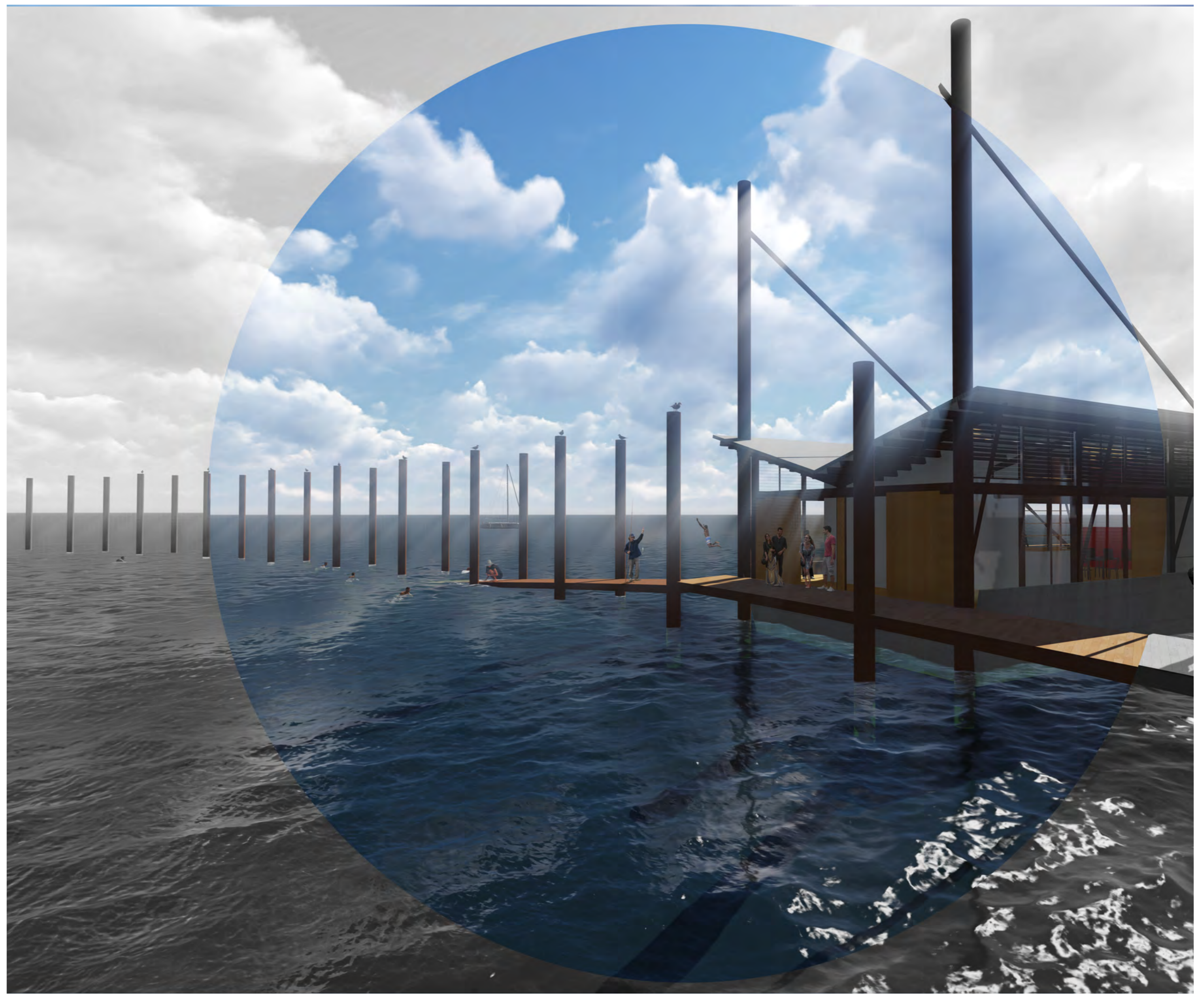
entrance + back of house floor plan 1.200



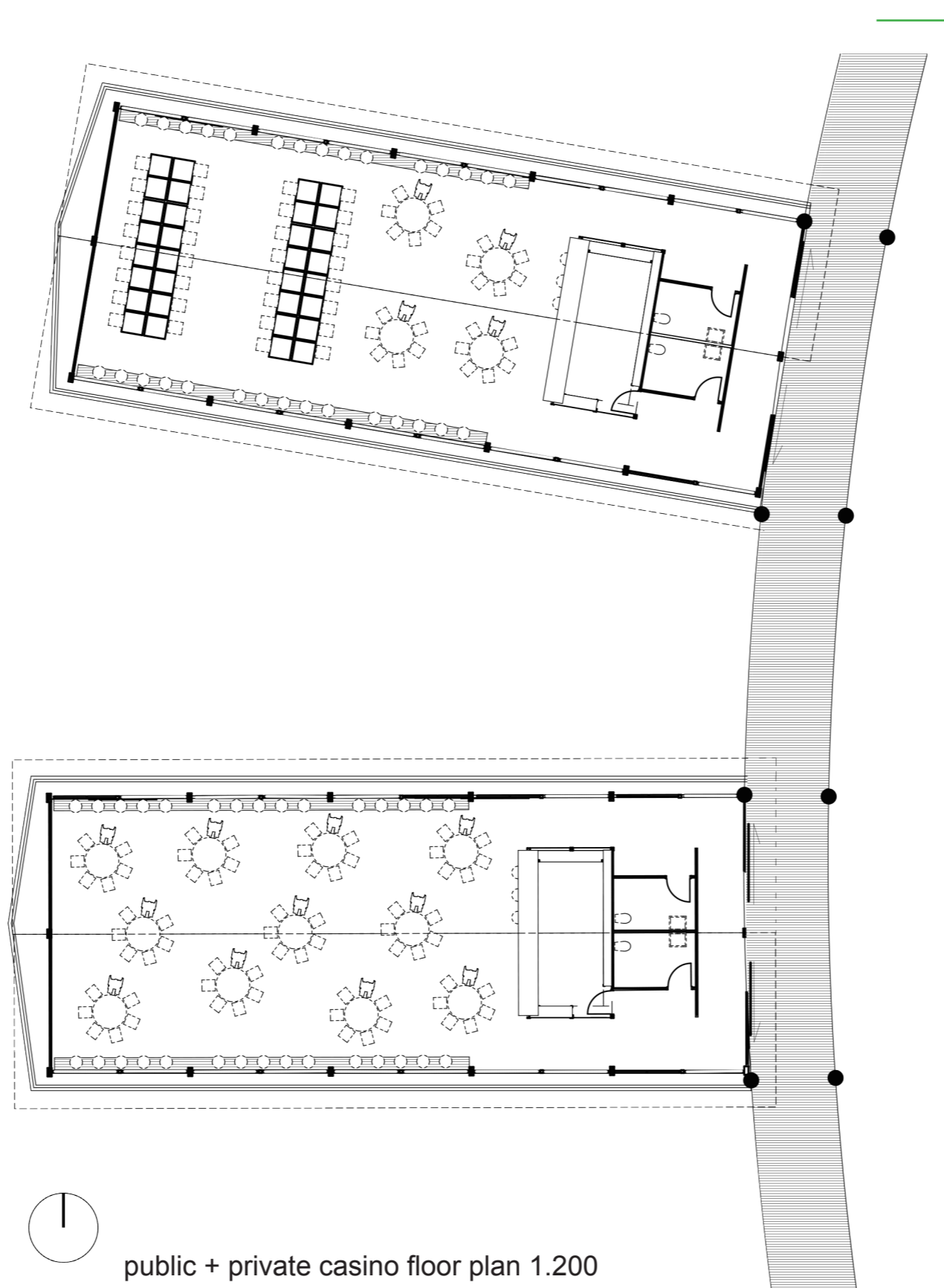
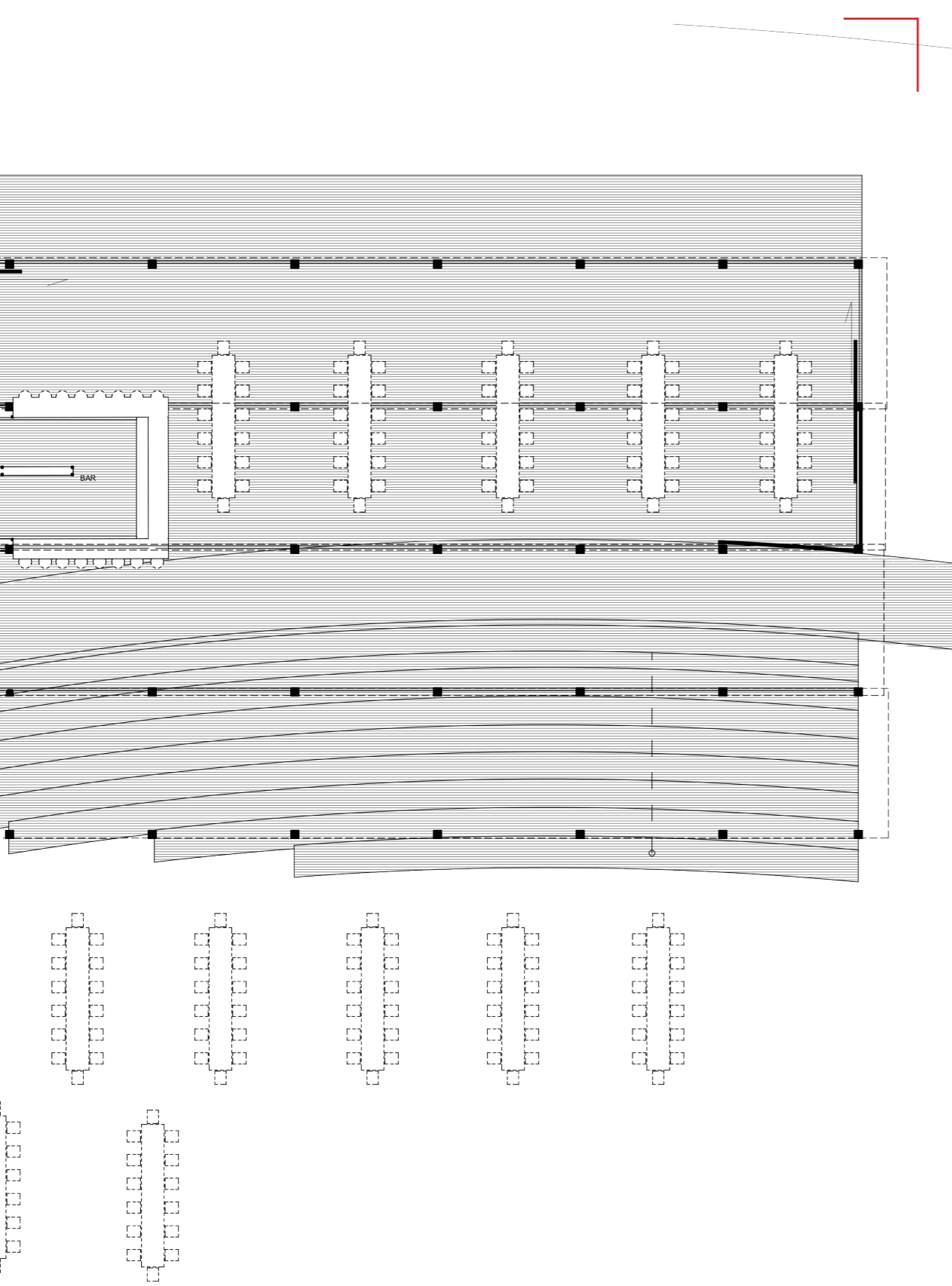
restaurant + bar floor plan 1.200



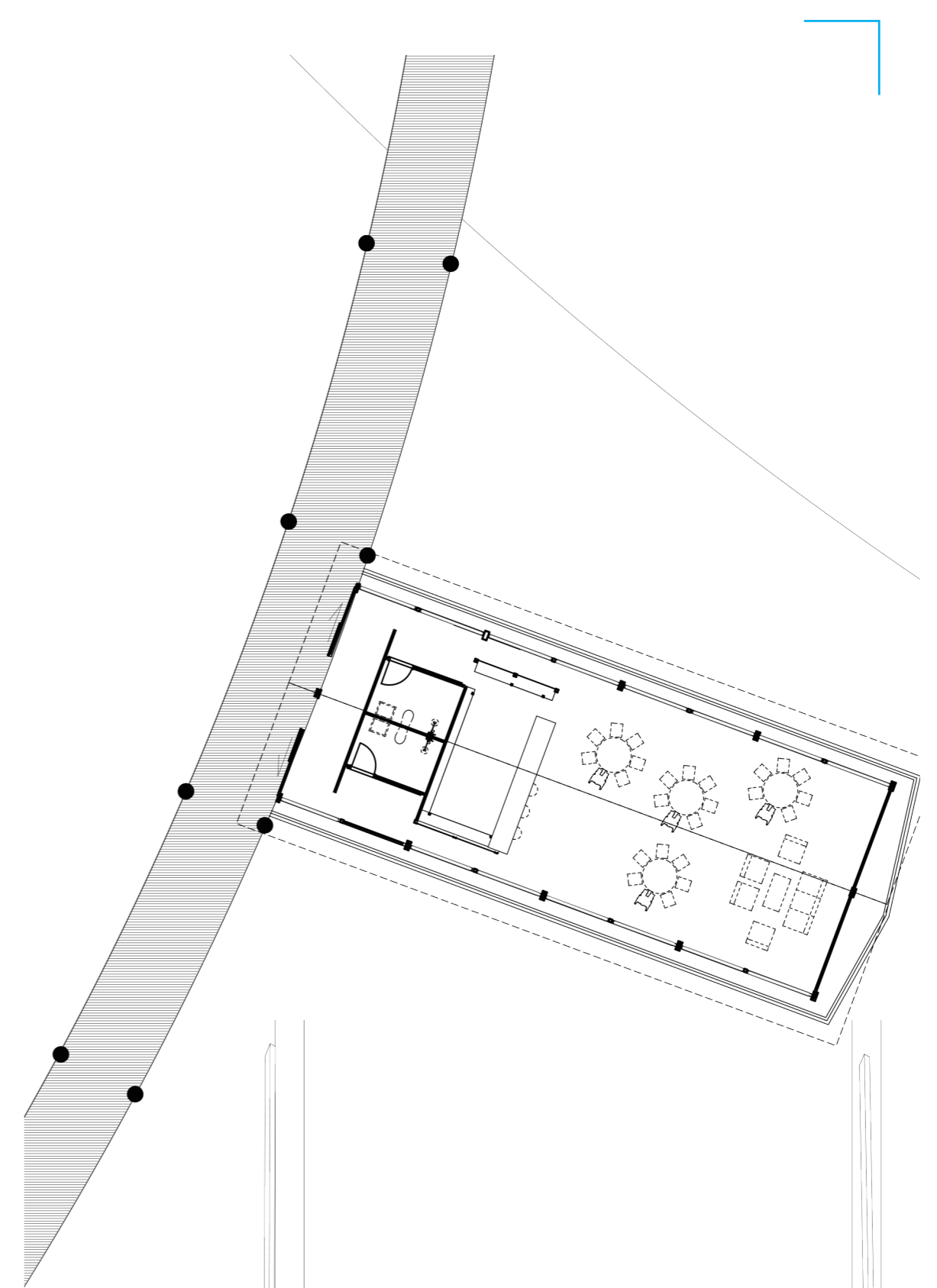
public casino section 1.200



3



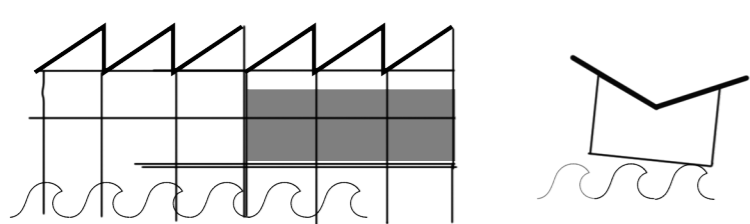
public + private casino floor plan 1.200



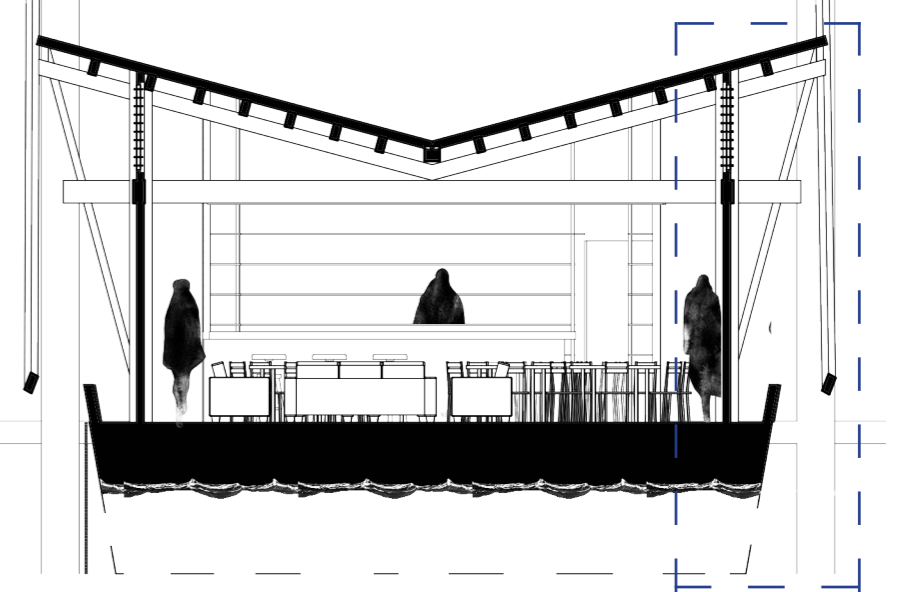
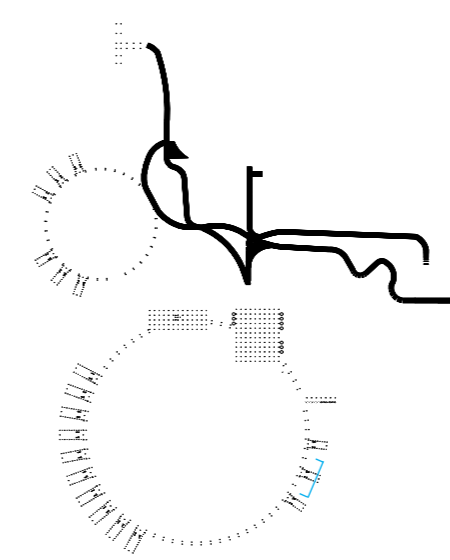
CLIMATICALLY COEXIST

there are so many layers upon the spit, from passionate communities, money hungry developers, kids flying kites + people diving below the waters surface. all of the spit's users love it for the same reason, its abundant rich natural space. the spit however could change dramatically in years to come due to climate change. it is important to not forget about this and a climatically coexistent casino will create revenue to eventually turn the spit into a national park, a responsible long term planning decision to benefit all. by creating a space in which acknowledgement of the climate is unavoidable people will become more aware and responsible for the environment around them. the climatically coexistent casino aims to make people feel vulnerable and experience the vast ocean around them.

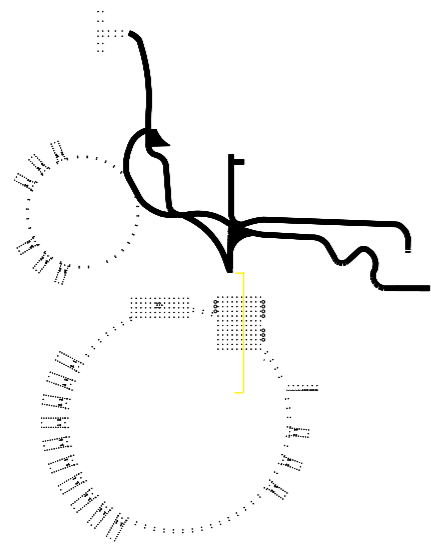
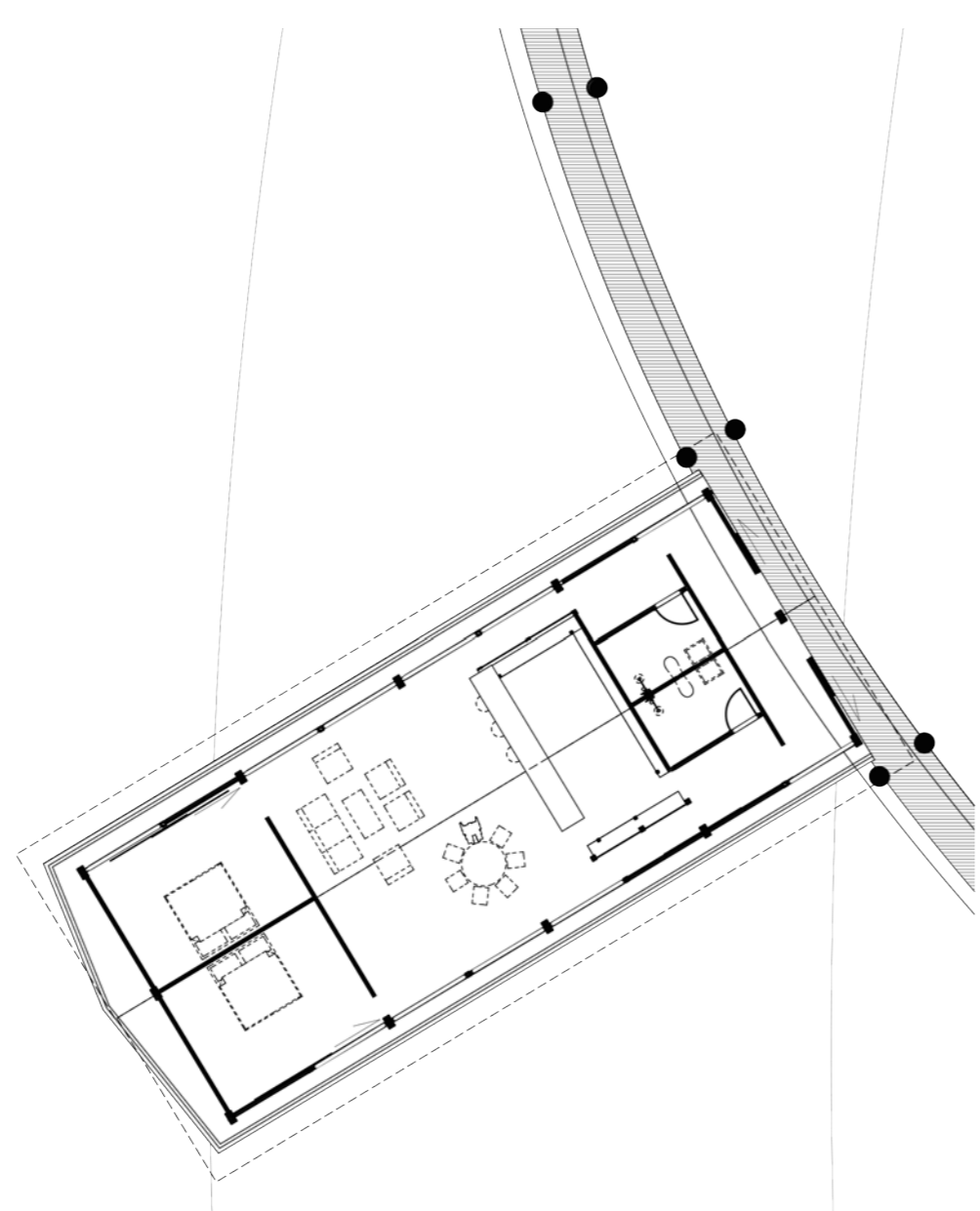
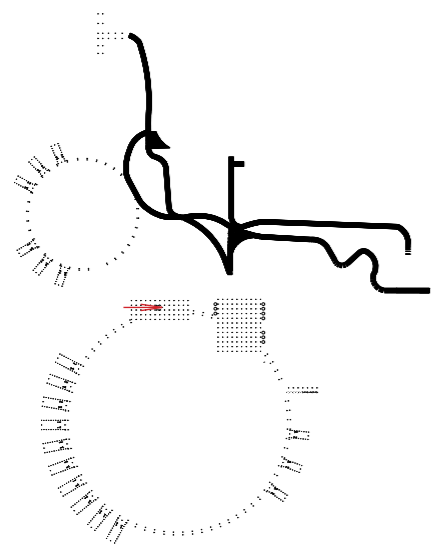
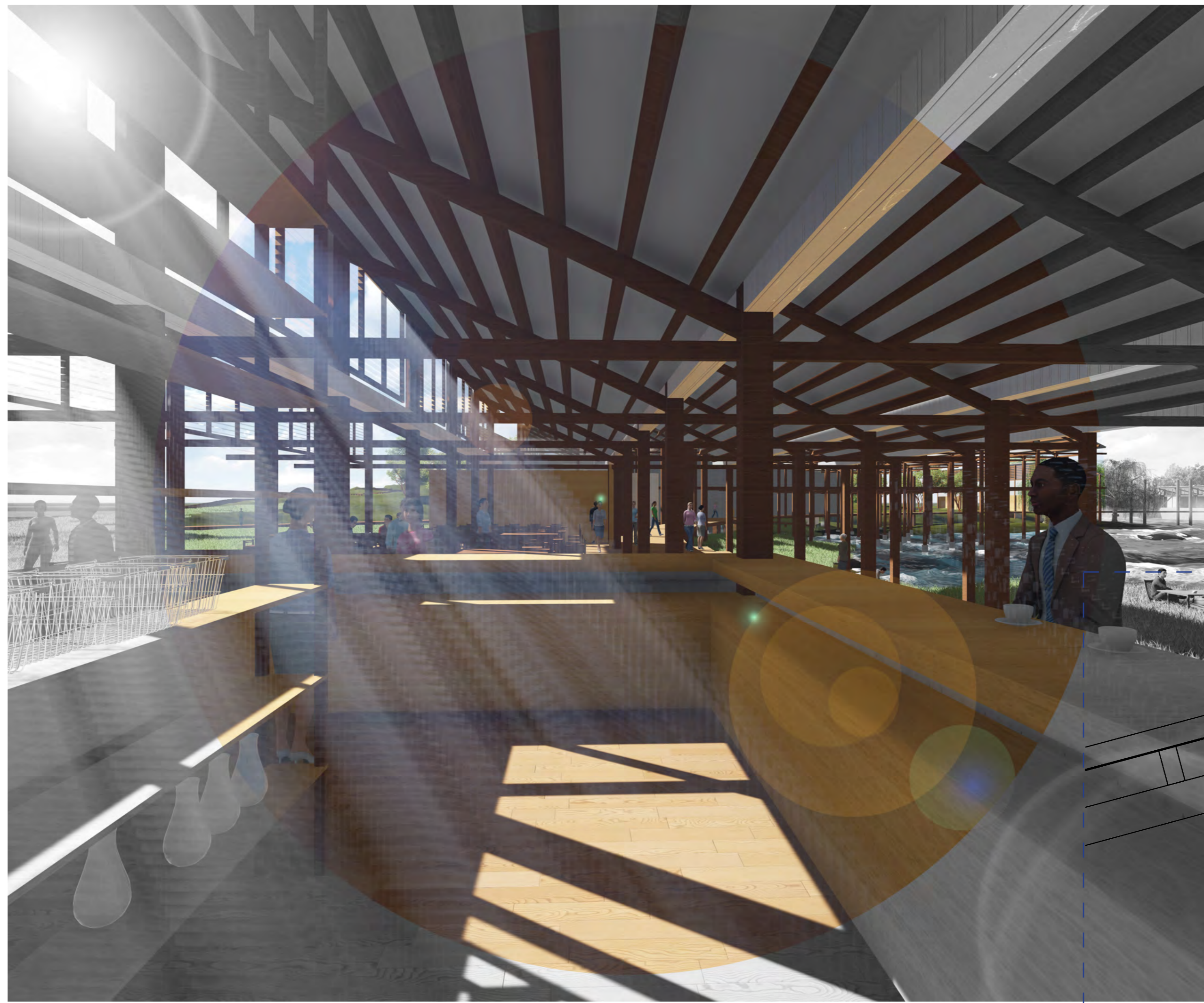
With non load bearing walls the spaces are incredibly adaptable for future community use. the casino element has been shunned to the back, making the spaces more for the community + people wanting to enjoy the spit in all its natural beauty. a secondary loop houses a climate change research institute and potentiall accomodation for the national park as well as the casino elements having the ability to adapt to house national park facilities - a tourist attraction with proven financial results



the large bunker space on land allows the climate to enter the structure, whilst having a safe feeling
the light weight boat like structures are moved by the climate, making the occupant unavoidably aware of their surroundings.
these small structures can be towed up stream in extreme weather or moved around for different uses

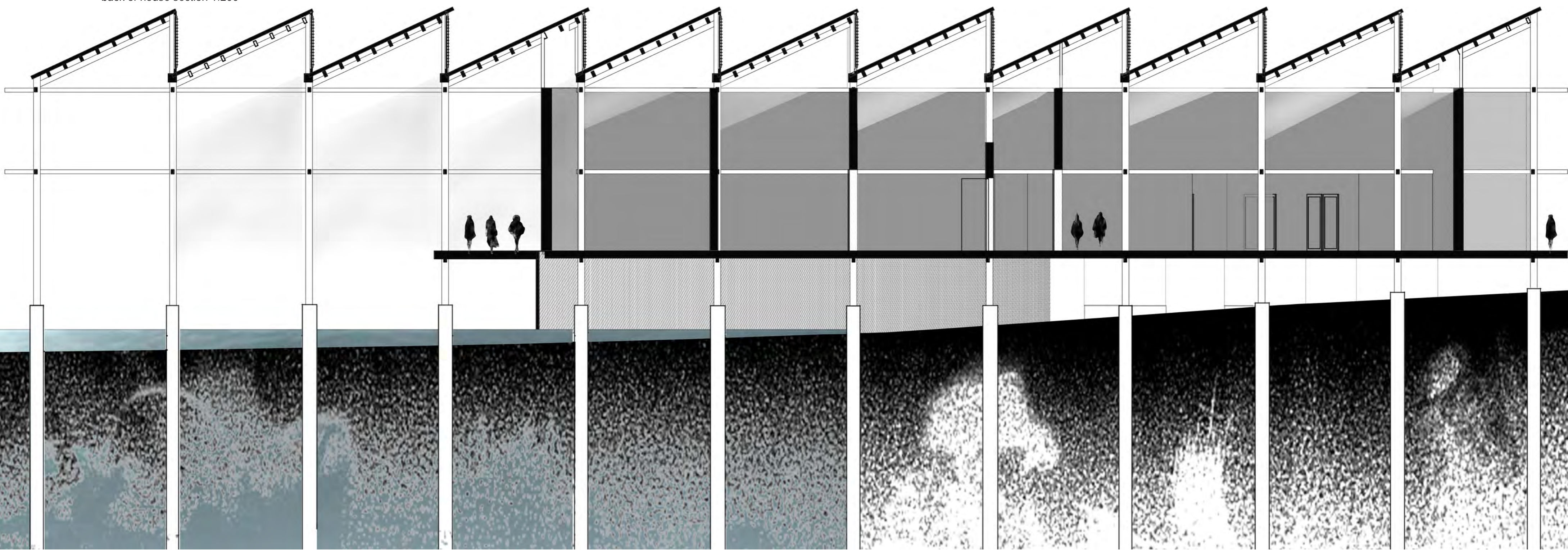


private casino section 1.200



accomodation floor plan 1.200

back of house section 1.200



BUTTERFLY ROOF
Simple light weight timber roof framing construction.
600 centres rafters 240 x 50
Moment connections
Box Gutter

110mm Louvres

TIMBER FRAME
Light weight construction timber frame.
Square Hollow Columns 300 x 150

HULL
75mm thick Ferro cement
19 gauge (1mm) square mesh surface mould
TIMBER FRAME + BULK HEADS
can be finished with an epoxy resin or anti fouling paint.

Will not be finished with anti-fouling paint as naturally letting algae to grow will feed fish and increase the relationship with the climate.
Incredibly fire resistant and strengthens over time

detail 1.20

water line