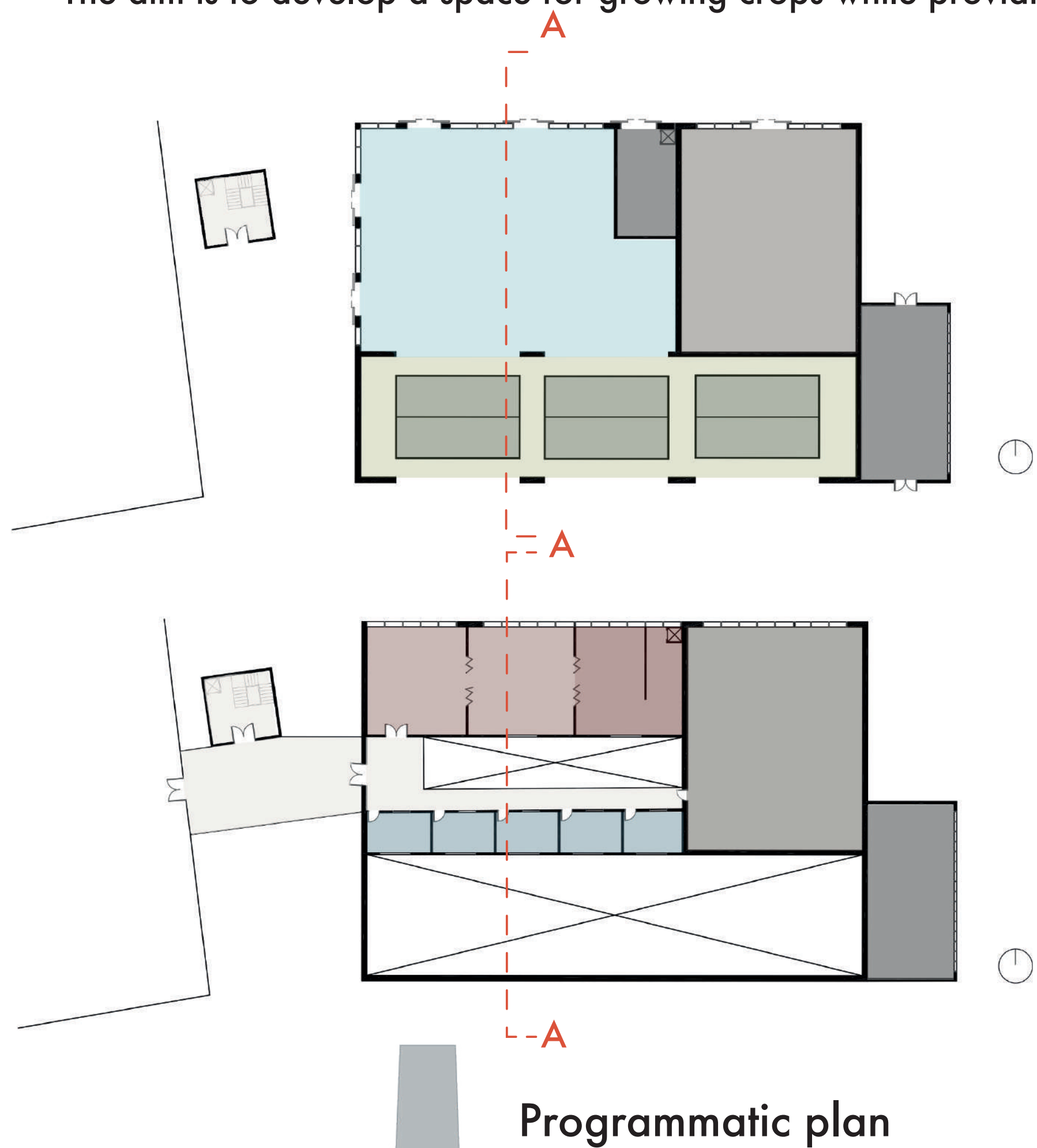


# East wing of the project

During the second half of the year, the project was reworked in a number of areas. Firstly, the entrance to the building was revisited. The ground was made watertight and access was revitalised through the construction of an extension with an extra storey to create a new entrance for the east wing, as well as the readjustment of the footbridge linking the two wings together.

The plan and cross-section illustrate the development of the programme. On the north-east facade, a large multi-activity hall has been designed, with an extension that will house a restaurant and artists' studios. A car park has also been provided, with capacity for a minimum of 200 spaces, in accordance with the specifications.

In the south-east section, the decision was made to develop a greenhouse. The existing structure has been retained in order to preserve the heritage and history of the site, while at the same time creating large openings in the walls to create an intermediate space between the outside and the inside. The aim is to develop a space for growing crops while providing direct access to a green space for users of the coworking space.



- circulation
- espace verte intérieur
- serre
- marché/street art
- atelier d'artiste
- salle de restauration
- cuisine
- stockage
- parking



Exhibition hall



Multi-activity hall



Market hall

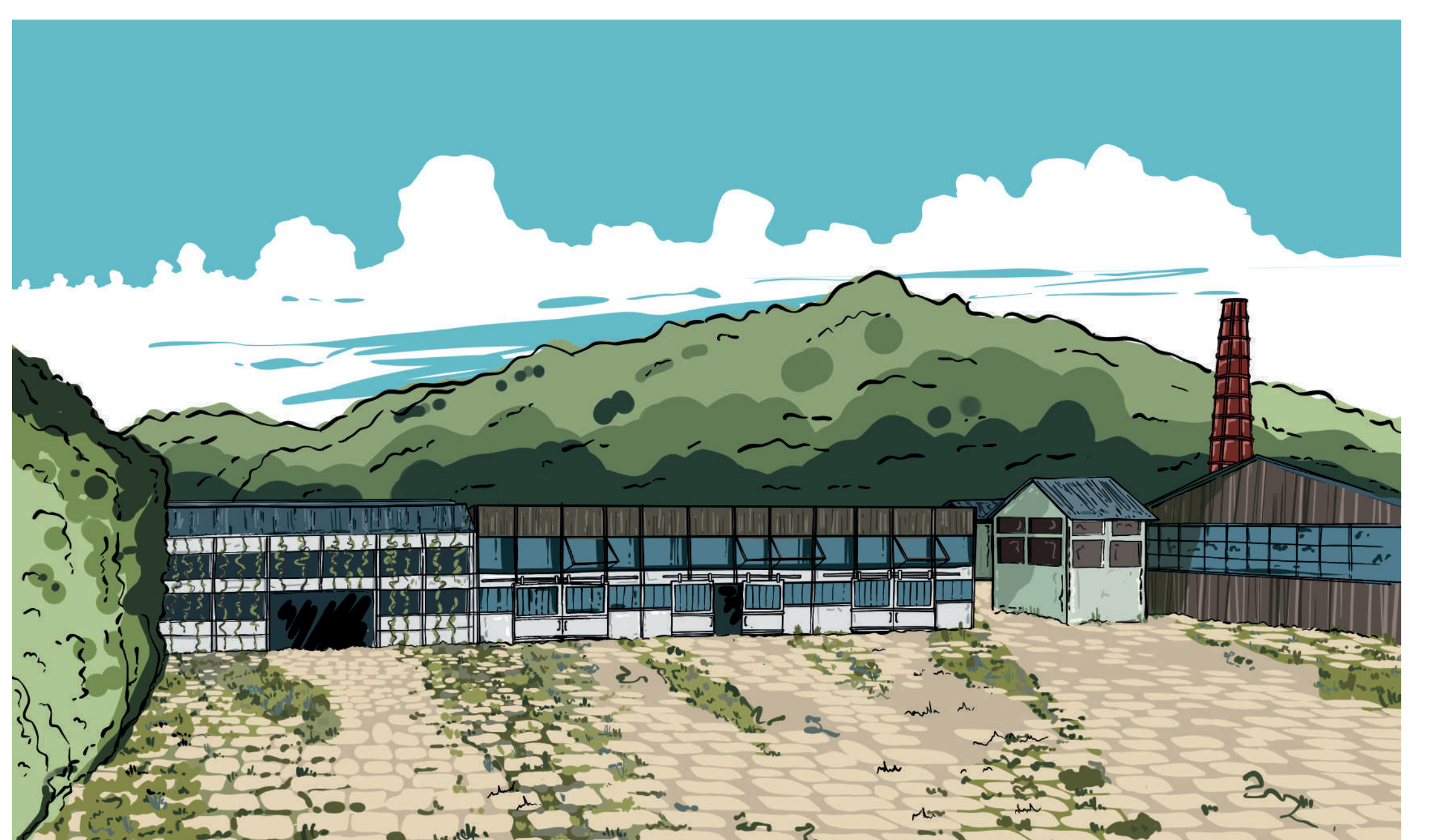
Ambient collage of the different functions of the Great Hall



Cross-section A-A



Ambient view of the greenhouse



Ambient view of the new entrance