

# Village of souls in transition : Housing

## TPOLOGY AND DISTRIBUTION

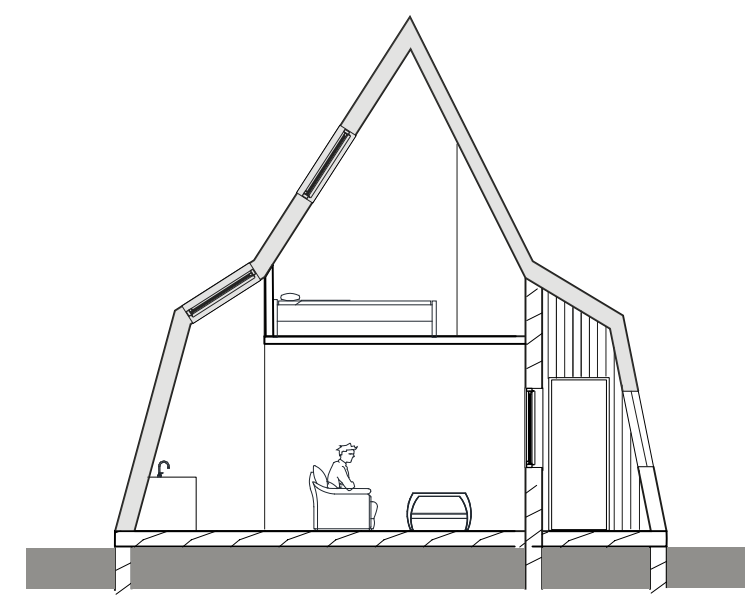
- 05** house with 8 bedrooms  
05 Guards  
35 Inmates
- 02** house with 8 bedrooms  
12 Guards  
04 Activity leaders
- 13** house with 4 bedrooms  
13 Guards  
39 Inmates
- 01** house with 6 bedrooms  
02 Doctors  
02 Psychologist  
02 Librarians
- 06** Studios  
06 Inmates
- 08** Isolation cells  
08 Inmates



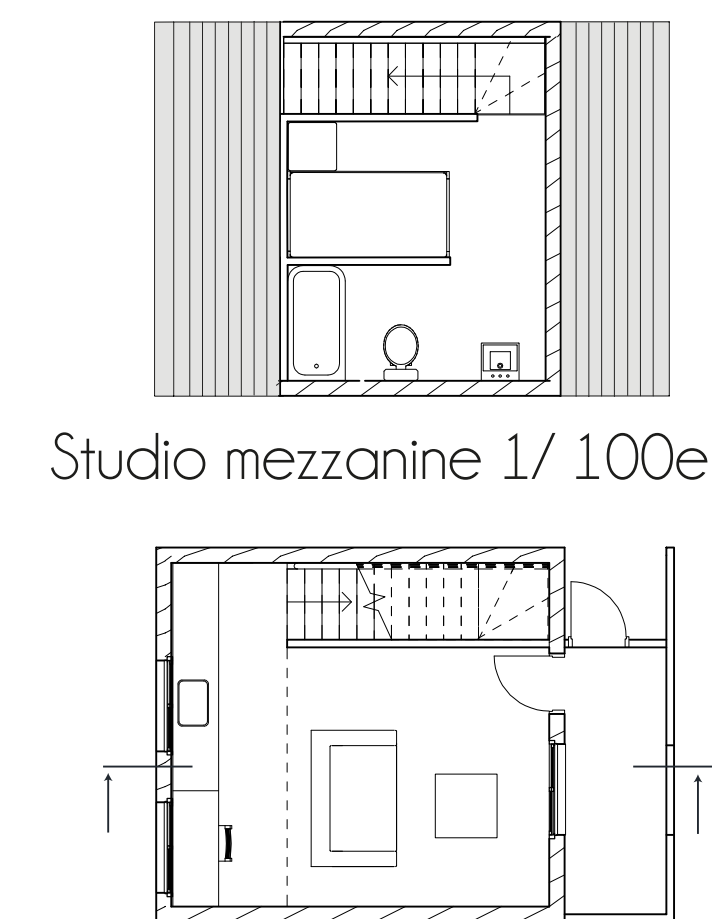
Floor plan for housing area



View of the village fences

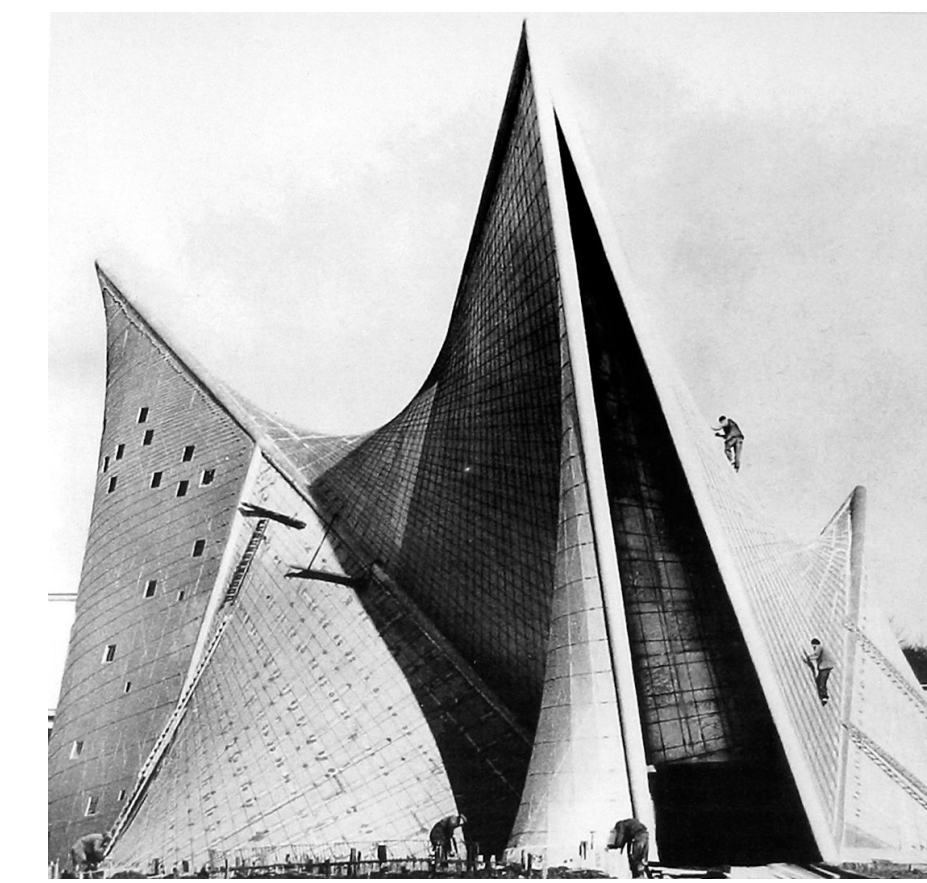


Cross-section of a studio 1/100 e

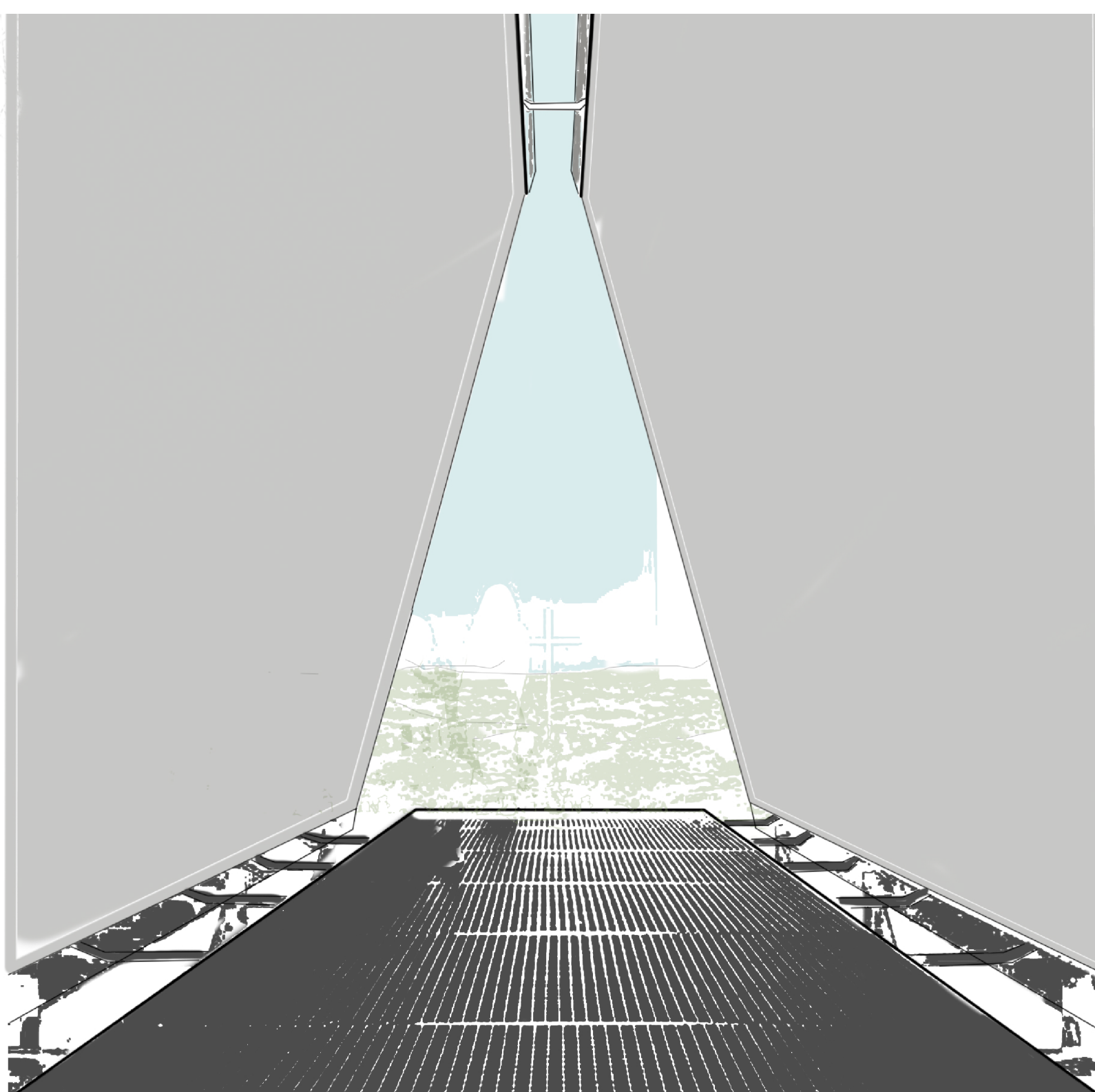


Studio mezzanine 1/100e

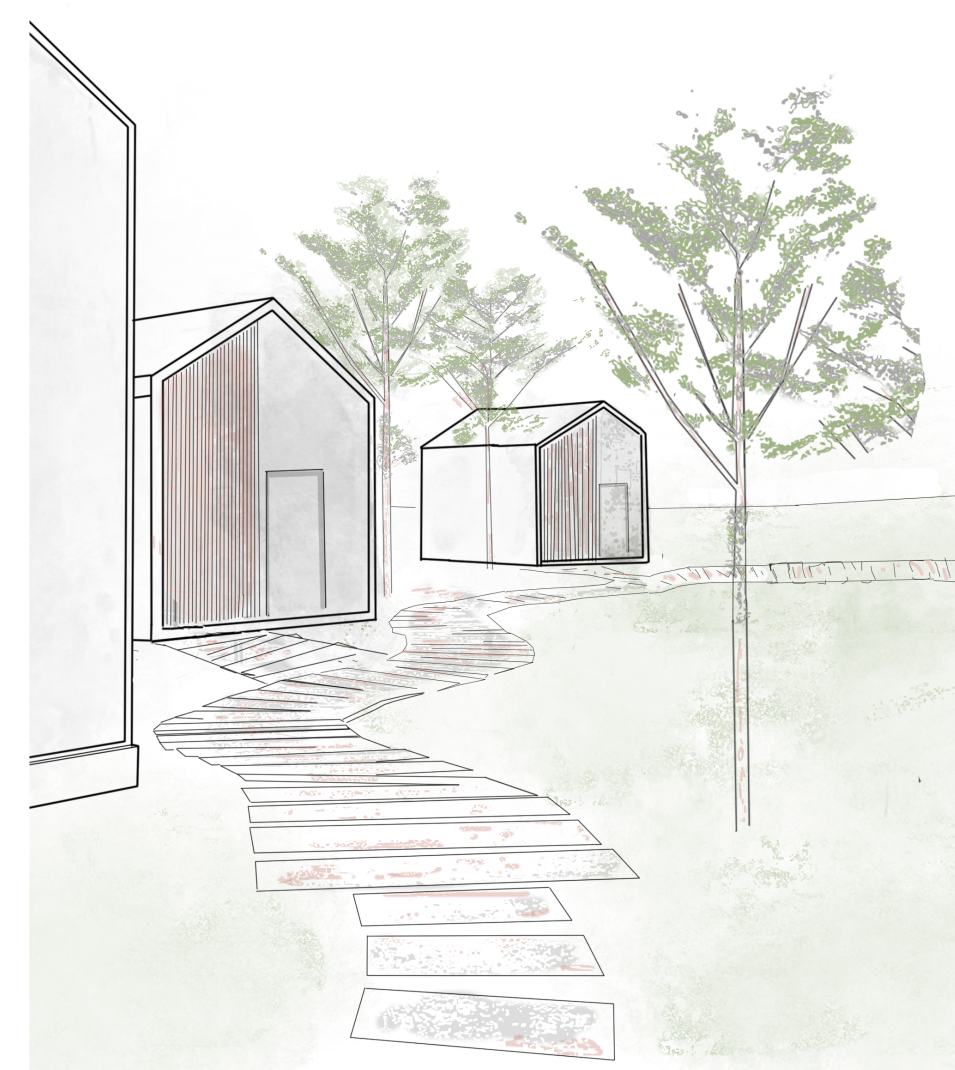
Studio ground floor 1/100e



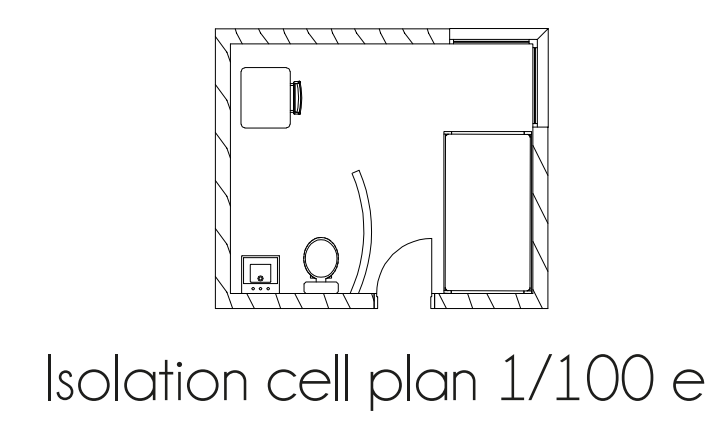
Reference :  
Pavillon Bruxelles  
le Corbusier



View of a meditation space



Plan of sanitary facilities  
in the isolation zone 1/100



Isolation cell plan 1/100 e



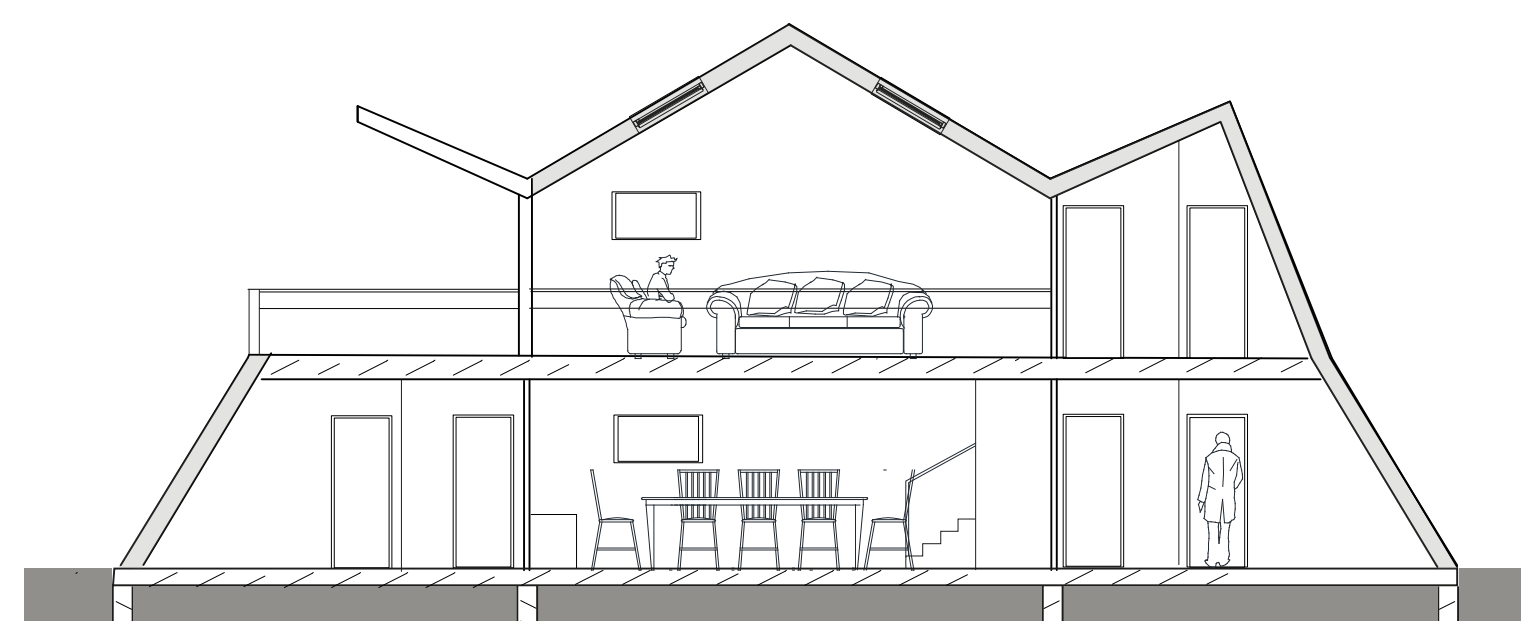
Musical drawing inspires housing



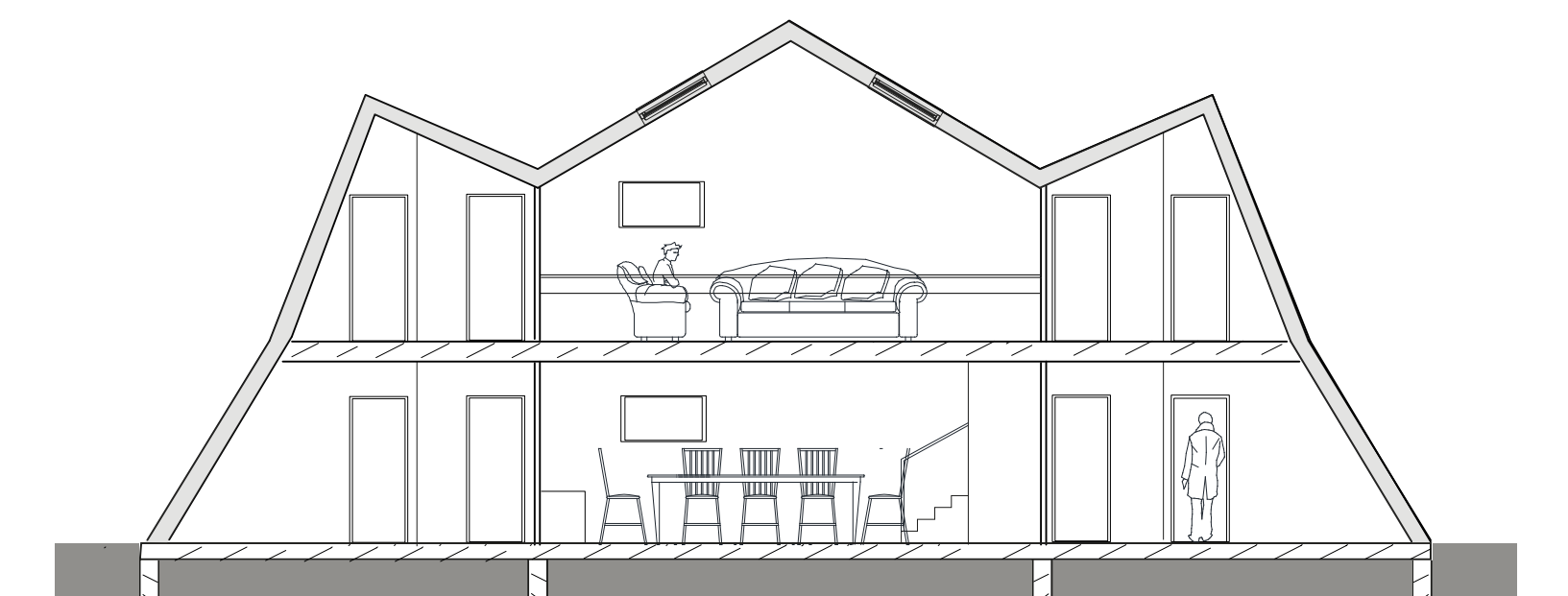
View of the village



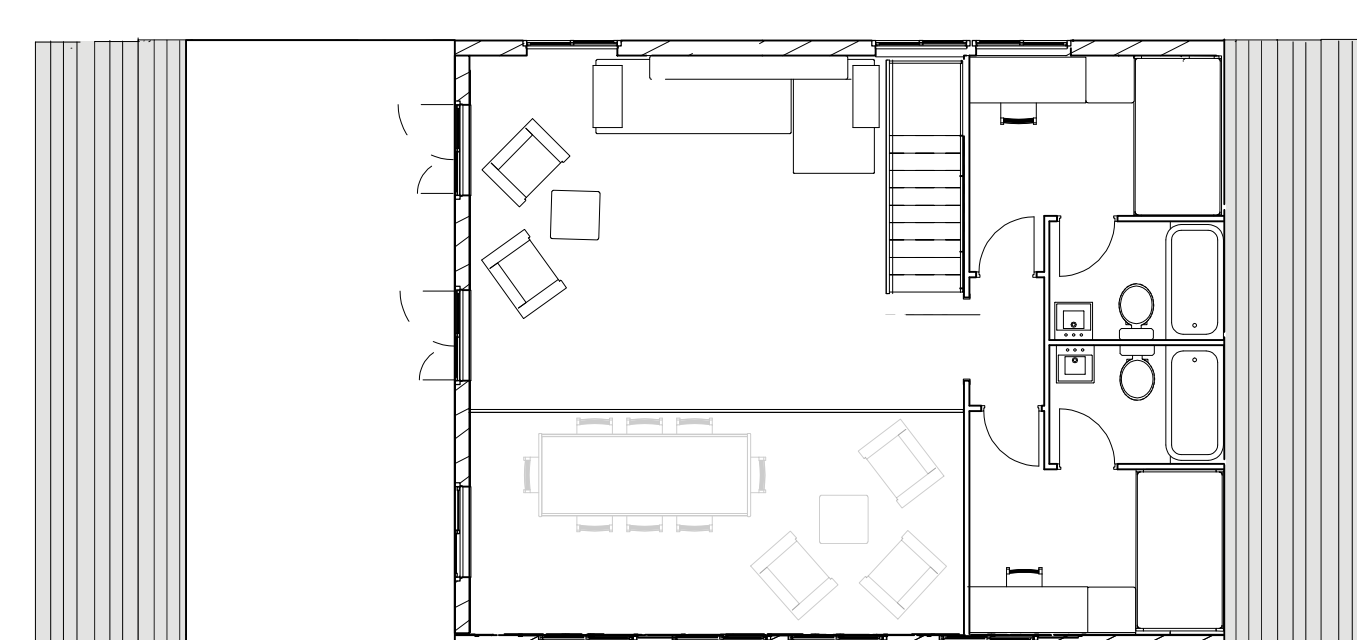
View of a living room



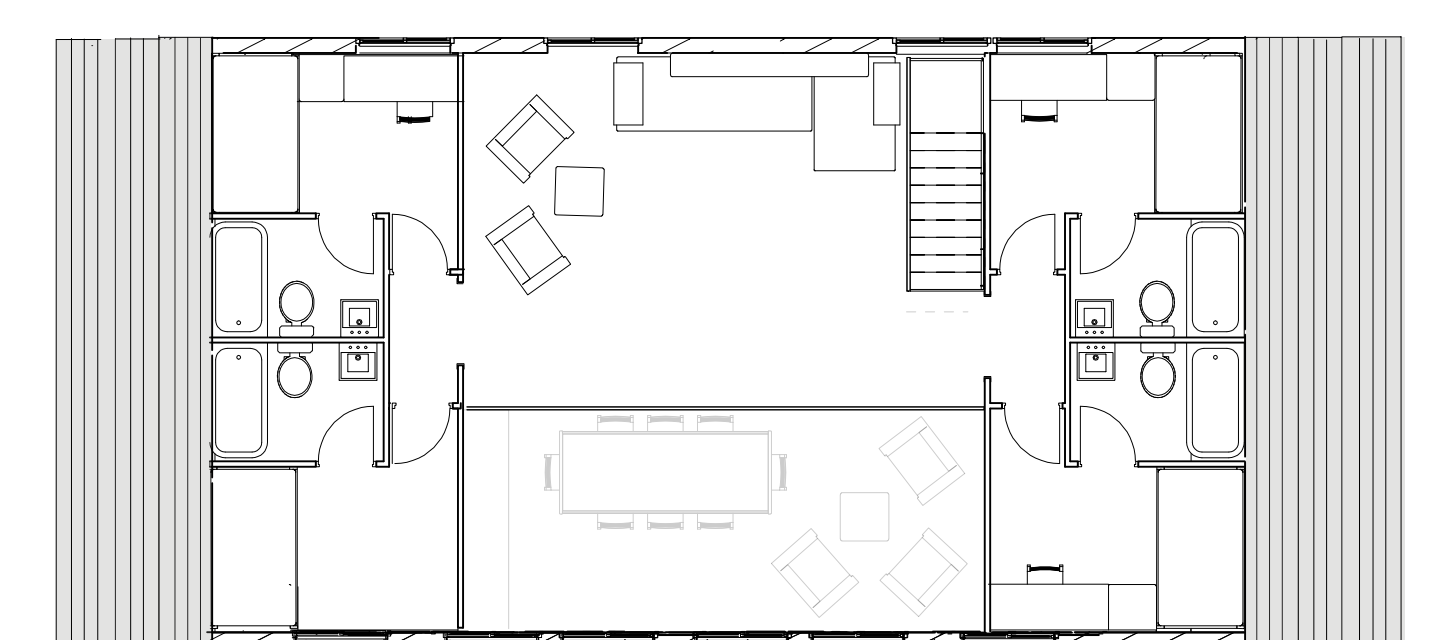
Cross-section of a 6-bedroom: 1/100 e



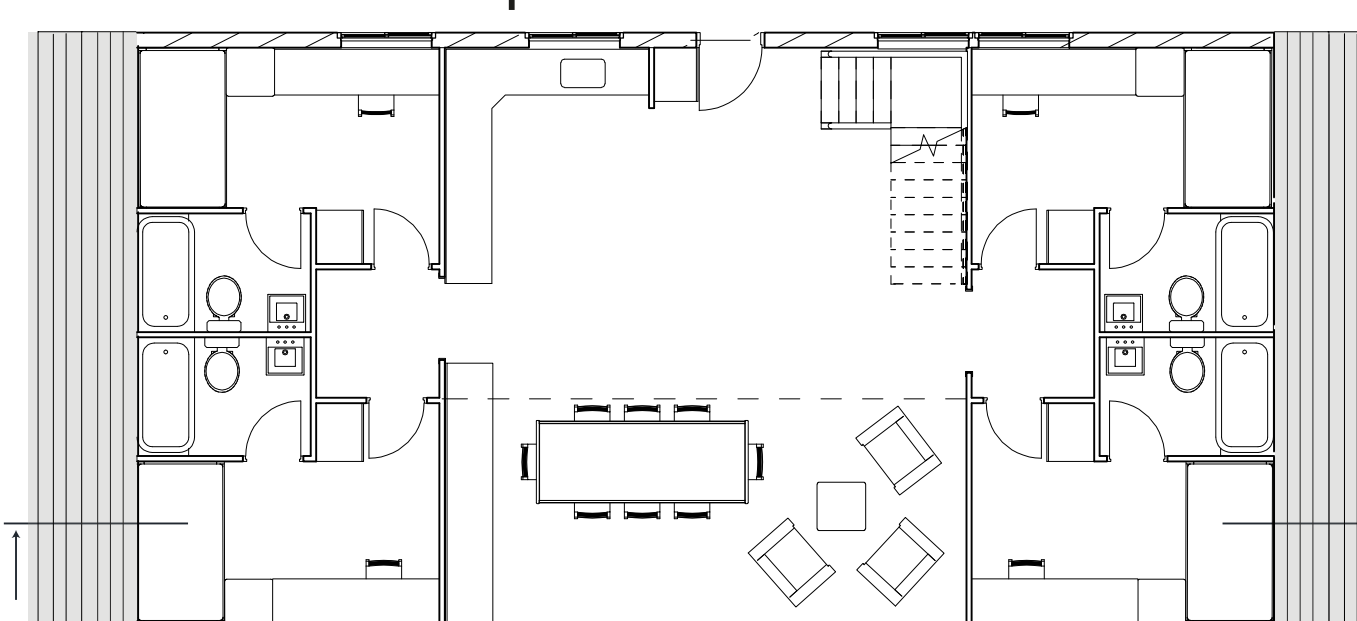
Cross-section of a 8-bedroom: 1/100 e



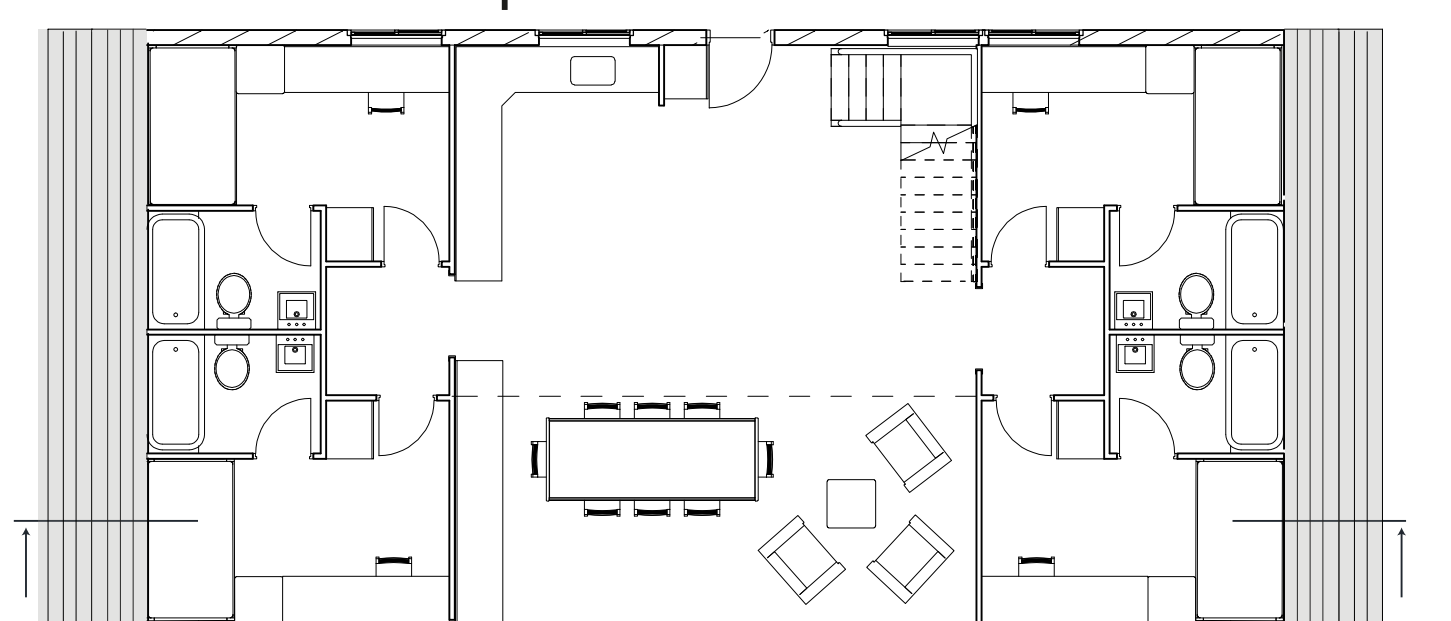
1st floor plan of 6-bedroom house



1st floor plan of 8-bedroom house



Ground floor plan of the 6-bedroom house



Ground floor plan of the 8-bedroom house